



1315 Mays Landing Rd  
Hammonton, NJ 08037

Asking \$259,900.00



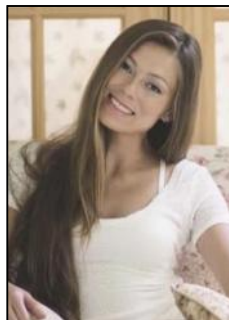
brigh MLS

### COMMENTS

Welcome to 1315 Mays Landing Road, Folsom, NJ—a haven for those who cherish the serenity of country living. Nestled in one of South Jersey's most tax-friendly municipalities, this 3-bedroom, 2.5-bathroom home on a generous .71-acre lot offers 1,554 square feet of inviting living space. Imagine a life where your days begin with the crisp, clean air of rural New Jersey and end with the golden hues of sunset over your expansive backyard. This charming residence boasts ample parking, a natural gas furnace, and access to top-notch schools (Folsom Elementary and Hammonton High School). The backyard is a perfect canvas for your outdoor dreams—be it a hammock, firepit, swing, or a deck for summertime BBQs. Although currently tenant-occupied, the property will soon be ready for its new owners to move in and make it their own. Presented in 'as is' condition, 1315 Mays Landing Road is more than just a house; it's a blank canvas waiting for your personal touch. Envision a home filled with stories, laughter, and the gentle whispers of the countryside. Don't miss this opportunity to create your own narrative in this affordable slice of rural New Jersey. Schedule your appointment today and start your journey towards a life of relaxation and joy in this picturesque setting.

### PROPERTY DETAILS

ParkingGarage	Basement	Heating	HotWater
None	Unfinished	Forced Air	Gas
		Gas-Natural	



Sewer  
Private  
Ask for Margarita Kobilianets  
Berger Realty Inc  
1670 Boardwalk, Ocean City  
Call: 609-391-0500  
Email to: [mak@bergerrealty.com](mailto:mak@bergerrealty.com)

