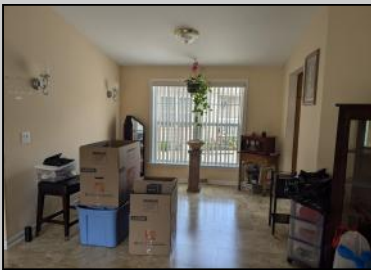
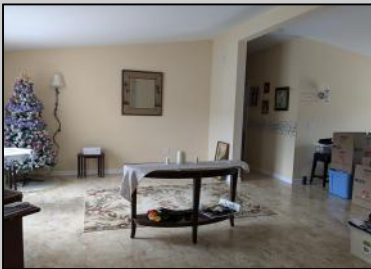




17 Fernwood
Mays Landing, NJ 08330

Asking \$212,000.00



COMMENTS

Spacious & well maintained 1680 sq.ft. Ritz Craft Cedar Model with original owner offers lowest lot rent. Built in 2006 but roof, HVAC, hot water heater & dishwasher have all been replaced within last few years. Insulated attic & crawl. Ceiling fans throughout. 2BR, 2B with den offers plenty of privacy. Upgraded kitchen with granite countertops, chef's center island, breakfast area opens to 3 season Florida Rm. w/newer windows. Master suite, walk in closet, master bath w/full wall storage cabinets, 2 seated shower, & his & hers sinks. Maintenance free living surrounded by landscaping stones means no grass to cut & oversized parking. Large storage shed. Lot rent \$561 includes water, sewer, taxes, outdoor pool, clubhouse activities, tennis & common area maintenance. Adult style living for those retirement years! Close to shore area, casinos, and easy access to Phila/NY.

PROPERTY DETAILS

Exterior	OutsideFeatures	ParkingGarage	OtherRooms
Vinyl	Porch Porch Enclosed Shed Sidewalks	None	Laundry/Utility Room Primary BR on 1st floor
InteriorFeatures	AppliancesIncluded	AlsoIncluded	Basement
Carbon Monoxide	Dishwasher Dryer Refrigerator Self Cleaning Oven Washer	Blinds	Crawl Space



Private

Ask for Marianne Johnsen
 Berger Realty Inc
 3160 Asbury Avenue, Ocean City
 Call: 609-399-0076
 Email to: maj@bergerrealty.com
 Central Electric

