



615 Philadelphia Ave  
Egg Harbor City, NJ 08215

Asking \$298,000.00

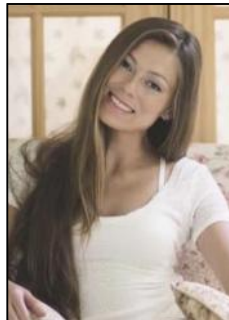


### COMMENTS

\*\*\*WELCOME HOME TO EHC ONE OF THE BEST KEPT SECRETS IN THE JERSEY SHORE\*\*\*BRING THE WHOLE FAMILY WITH A FULL WALK OUT BASEMENT!! CONVENIENTLY LOCATED NEXT TO GALLOWAY AND MINUTES TO THE BEACHES BOARDWALK AND AC CASINOS. THESE 3 BEDROOM 1.5 BATH HAS BEEN WELL MAINTAINED AND HAS ANOTHER ENTIRE POTENTIAL LIVING QUARTER WITH A FULL WALK OUT LOWER/ BASEMENT AREA PERFECT FOR EXTENDED FAMILY OR POTENTIAL RENTAL SPACE WAS FORMERLY AN ARCHITECTURAL OFFICE. GREAT BACKYARD W/ SHED AND A GARDENER'S DELIGHT! GREAT COVERED FRONT PORCH GORGEOUS TRUE HARDWOOD FLOORS WONDERFUL BACK YARD AND SO MUCH MORE PLAYGROUND IS JUST A SHORT STROLL AND THE EHC LAKE IS ROUGHLY 2 MILES AWAY! BE SURE TO ADD THIS ONE TO YOUR SEARCH EZ TO SHOW

### PROPERTY DETAILS

Exterior Aluminum	OutsideFeatures Curbs Paved Road Porch Shed Sidewalks	ParkingGarage None	OtherRooms Dining Area Eat In Kitchen Primary BR on 1st floor
Basement 6 Rooms Full Heated Inside Entrance Outside	Heating Radiator	Cooling Window Units	
Water Public	Sewer Public Sewer		



Ask for Margarita Kobliants  
Berger Realty Inc  
1670 Boardwalk, Ocean City  
Call 609-391-0500  
Email to mak@bergerrealty.com

