



701 Route 50
Hamilton Township, NJ 08234

Asking \$999,900.00

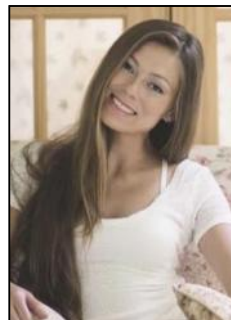


COMMENTS

6480 square feet in great shape with good parking too. Features several offices and 2 conference rooms and a large beautiful commercial kitchen with dining area. This nice 1st class building also has 2 large storage rooms. Route 50 downtown Mays Landing location, with the AC expressway down the street for commuters. Property is zoned GC--General Commercial. Some of the possible uses are: professional office, bank, bars, taverns, pubs, Convenience food stores, drugstore, dry cleaning, restaurants, retail store and shops, artist studio, General business establishments. See the helpful virtual tour at: <https://www.youtube.com/watch?v=kZmVOg0lhKw>

PROPERTY DETAILS

Exterior	ParkingGarage	InteriorFeatures	Heating
Masonry	11 or More Spaces	220 Volt Electricity	Forced Air
Vinyl	Paved	Restroom	Gas-Natural
		Security System	
		Smoke/Fire Alarm	
		Storage	
Water	Sewer		
Public	Public Sewer		



Ask for Margarita Kobilianets
Berger Realty Inc
1670 Boardwalk, Ocean City
Call: 609-391-0500
Email to: mak@bergerrealty.com

