

Berger Realty

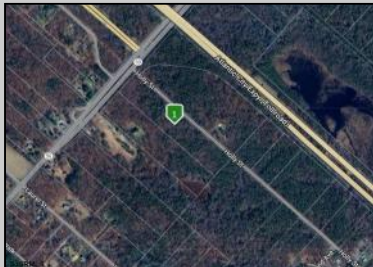
Since 1928



Ocean 17
1670 Boardwalk
Ocean City, NJ 08226
609-391-0500



oc17@BergerRealty.com



2764 Route 50
Mays Landing, NJ 08330

Asking \$185,000.00



COMMENTS

Property consists of 8.14 acres. Located at the corner of Rt 50 and Holly St. Close to Rt 322. Due diligence to the potential buyer to check with Township for land usage information and zoning.

PROPERTY DETAILS



Ask for John Andrews
Berger Realty Inc
1670 Boardwalk, Ocean City
Call: 609-391-0500
Email to: ja@bergerrealty.com

