

Berger Realty

Since 1928



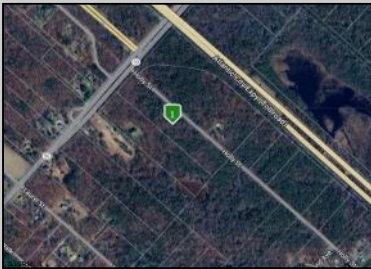
Berger Realty, Inc.
55th & Haven Avenue
Ocean City, NJ 08226
609-399-0040

✉ info@bergerrealty.com



2764 Route 50
Mays Landing, NJ 08330

Asking \$185,000.00



COMMENTS

Property consists of 8.14 acres. Located at the corner of Rt 50 and Holly St. Close to Rt 322. Due diligence to the potential buyer to check with Township for land usage information and zoning.

PROPERTY DETAILS



Ask for Gary Bingham
Berger Realty Inc
109 E 55th St., Ocean City
Call: 609-399-4211
Email to: gbs@bergerrealty.com

