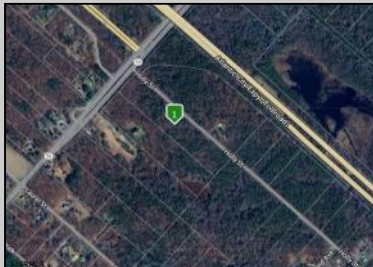


Berger Realty

Since 1928



Berger Realty, Inc.
3160 Asbury Avenue
Ocean City, NJ 08226
1-877-237-4371 / 609-399-0076
info@bergerrealty.com



2764 Route 50
Mays Landing, NJ 08330

Asking \$185,000.00



COMMENTS

Property consists of 8.14 acres. Located at the corner of Rt 50 and Holly St. Close to Rt 322. Due diligence to the potential buyer to check with Township for land usage information and zoning.

PROPERTY DETAILS



Ask for Brandon Howell
Berger Realty Inc
3160 Asbury Avenue, Ocean City
Call: 609-399-0076
Email to: bah@bergerrealty.com

