

Berger Realty

Since 1928

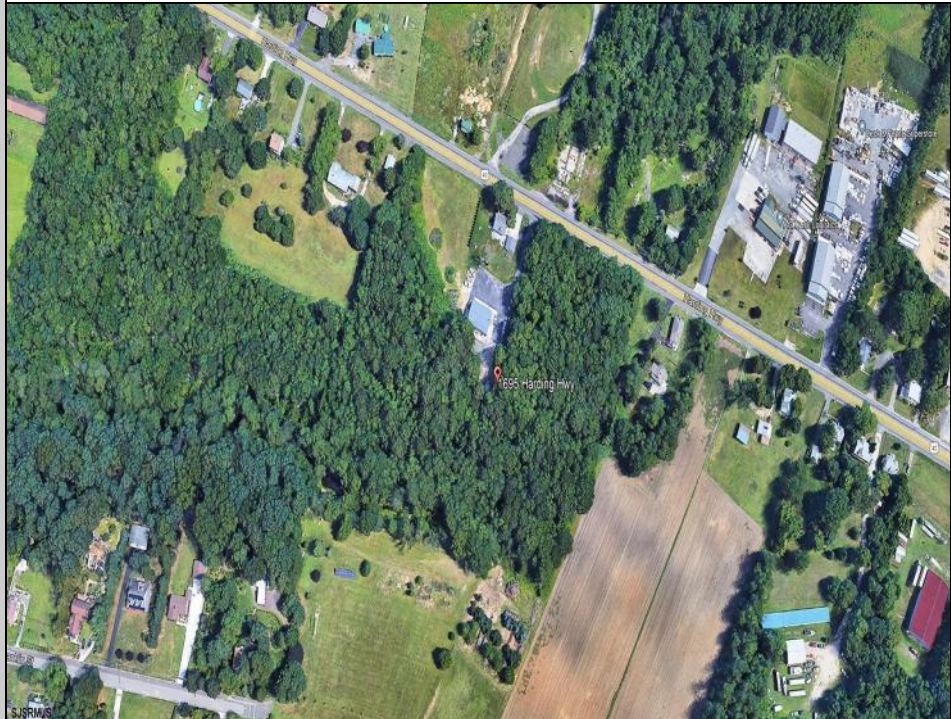


Berger Realty, Inc.
3160 Asbury Avenue
Ocean City, NJ 08226
1-877-237-4371 / 609-399-0076
✉ info@bergerrealty.com



1695 Harding Highway
Newfield, NJ 08361

Asking \$149,000.00



COMMENTS

PRIME VACANT LAND. Two adjacent combined lots available: 2.25 and 2.24 acres on Harding Highway zoned Highway Commercial. Bring your business to this busy corridor with plenty of exposure. Zoning opportunities can be diner, restaurant, bar, professional office, commercial business, etc. Buyer responsible for their own due diligence. Possible Residential or Mixed Use with Approval from Twp.

PROPERTY DETAILS



Ask for Cynthia Balles
Berger Realty Inc
3160 Asbury Avenue, Ocean City
Call: 609-399-0076
Email to: cyn@bergerrealty.com

