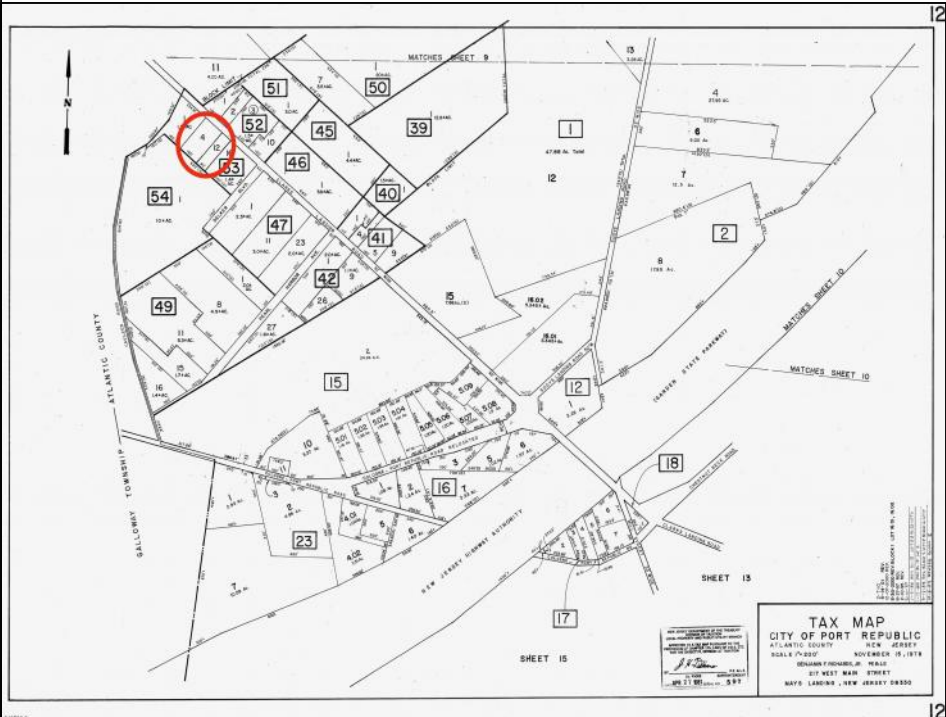


00 Clarks Landing  
Port Republic, NJ 08241

Asking \$99,000.00



### COMMENTS

Port Republic - Great location and a rare find! 2 contiguous lots on Clarks Landing Road. Lots equal 1.43 acres. Lot #4 - 160 ft. frontage. Lot #12 - 80 ft. frontage. Depth is 260ft. Wooded, All approvals including Pinelands, Zoning solely the responsibility of the buyer. Great opportunity for builder/investor or homeowner.

### PROPERTY DETAILS



Ask for Phillip Bellucci  
Berger Realty Inc  
1330 Bay Avenue, Ocean City  
Call: 609-391-1330  
Email to: pjb@bergerrealty.com

