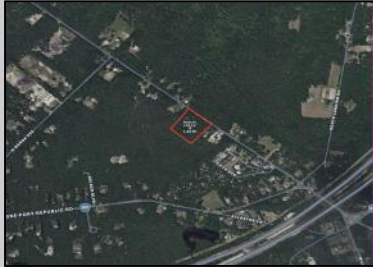


# Berger Realty

Since 1928

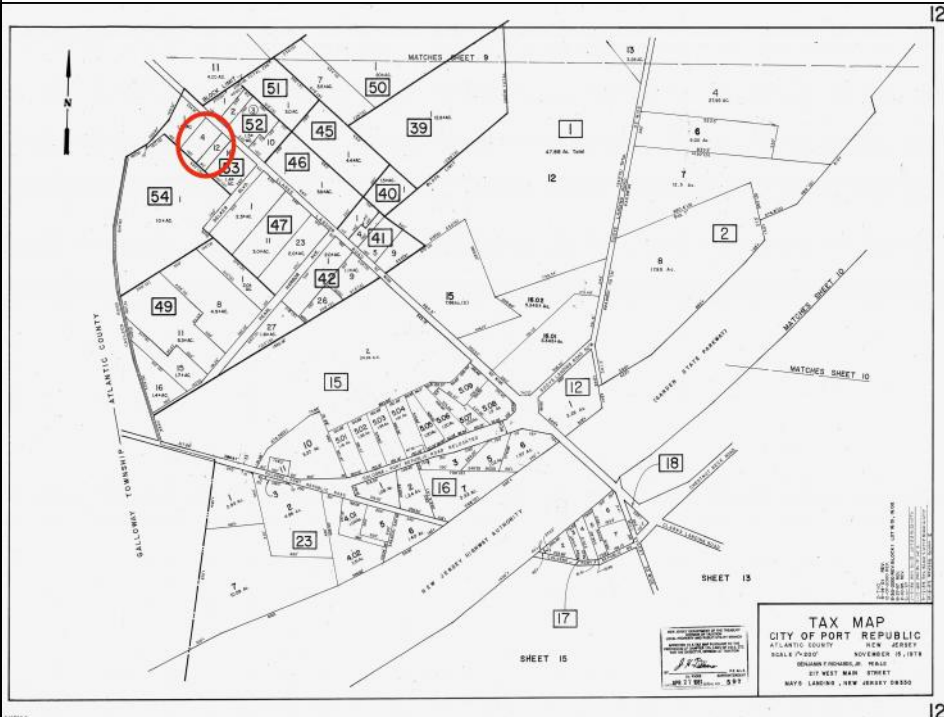


**Berger Realty, Inc**  
1330 Bay Avenue  
Ocean City, NJ 08226  
609-391-1330/609-391-1300  
✉ [info@bergerrealty.com](mailto:info@bergerrealty.com)



**00 Clarks Landing  
Port Republic, NJ 08241**

**Asking \$99,000.00**



### COMMENTS

Port Republic - Great location and a rare find! 2 contiguous lots on Clarks Landing Road. Lots equal 1.43 acres. Lot #4 - 160 ft. frontage. Lot #12 - 80 ft. frontage. Depth is 260ft. Wooded, All approvals including Pinelands, Zoning solely the responsibility of the buyer. Great opportunity for builder/investor or homeowner.

### PROPERTY DETAILS



Ask for Margaret M. Kurz  
Berger Realty Inc  
1330 Bay Avenue, Ocean City  
Call: 609-391-1330  
Email to: [mmk@bergerrealty.com](mailto:mmk@bergerrealty.com)

