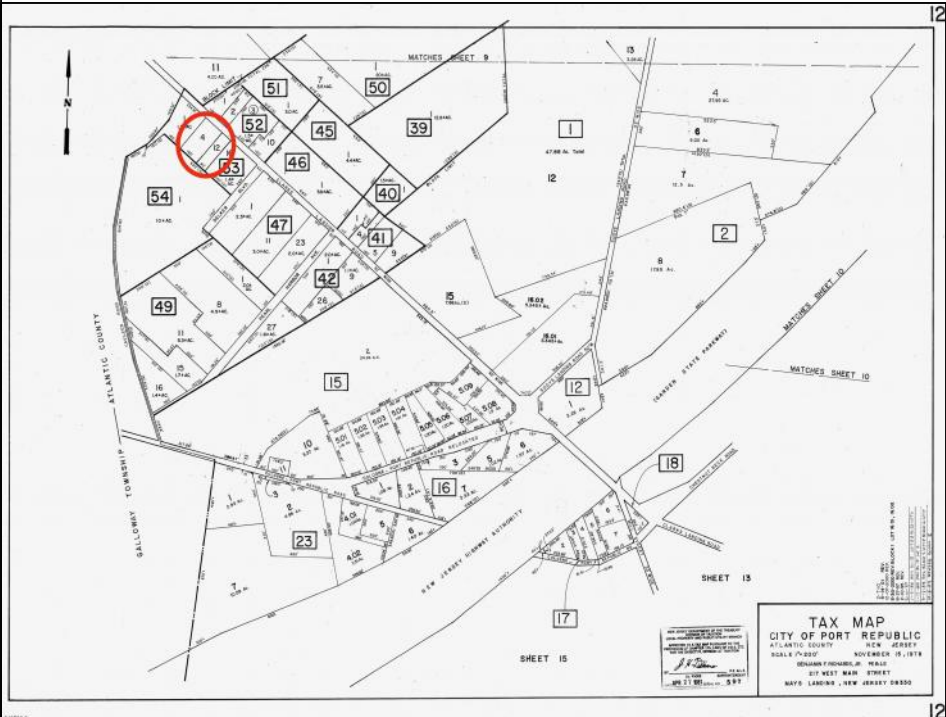


**00 Clarks Landing  
 Port Republic, NJ 08241**

**Asking \$99,000.00**



**COMMENTS**

Port Republic - Great location and a rare find! 2 contiguous lots on Clarks Landing Road. Lots equal 1.43 acres. Lot #4 - 160 ft. frontage. Lot #12 - 80 ft. frontage. Depth is 260ft. Wooded, All approvals including Pinelands, Zoning solely the responsibility of the buyer. Great opportunity for builder/investor or homeowner.

**PROPERTY DETAILS**



Ask for Domenic Ballerini  
 Berger Realty Inc  
 3160 Asbury Avenue, Ocean City  
 Call: 609-399-0076  
 Email to: [dvb@bergerrealty.com](mailto:dvb@bergerrealty.com)

