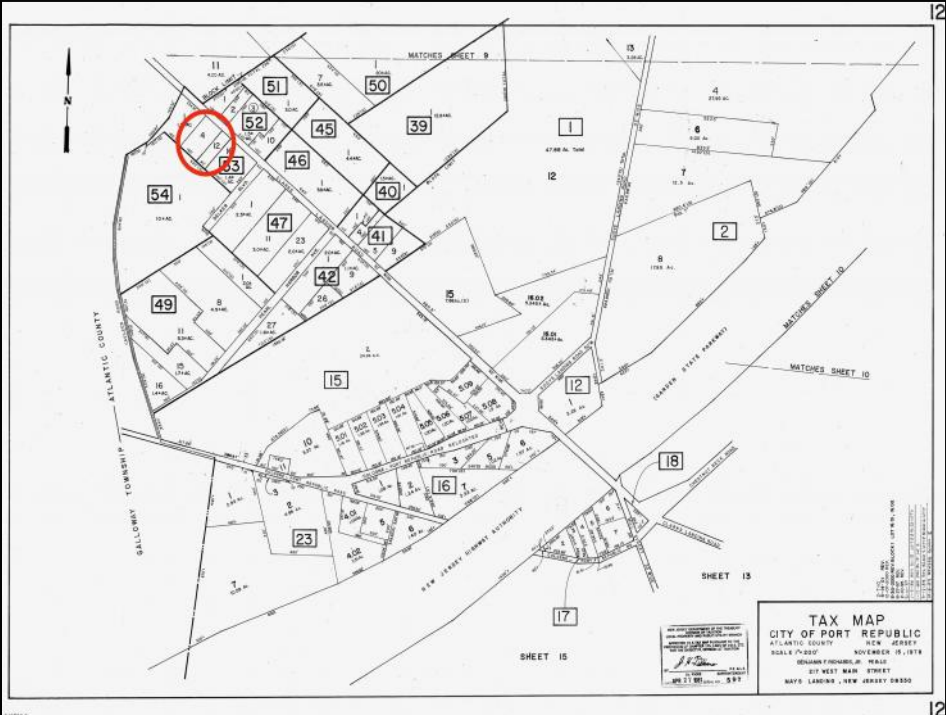


00 Clarks Landing
Port Republic, NJ 08241

Asking \$99,000.00



COMMENTS

Port Republic - Great location and a rare find! 2 contiguous lots on Clarks Landing Road. Lots equal 1.43 acres. Lot #4 - 160 ft. frontage. Lot #12 - 80 ft. frontage. Depth is 260ft. Wooded, All approvals including Pinelands, Zoning solely the responsibility of the buyer. Great opportunity for builder/investor or homeowner.

PROPERTY DETAILS



Ask for Dawn Scarlata
Berger Realty Inc
1330 Bay Avenue, Ocean City
Call: 609-391-1330
Email to: dns@bergerrealty.com

