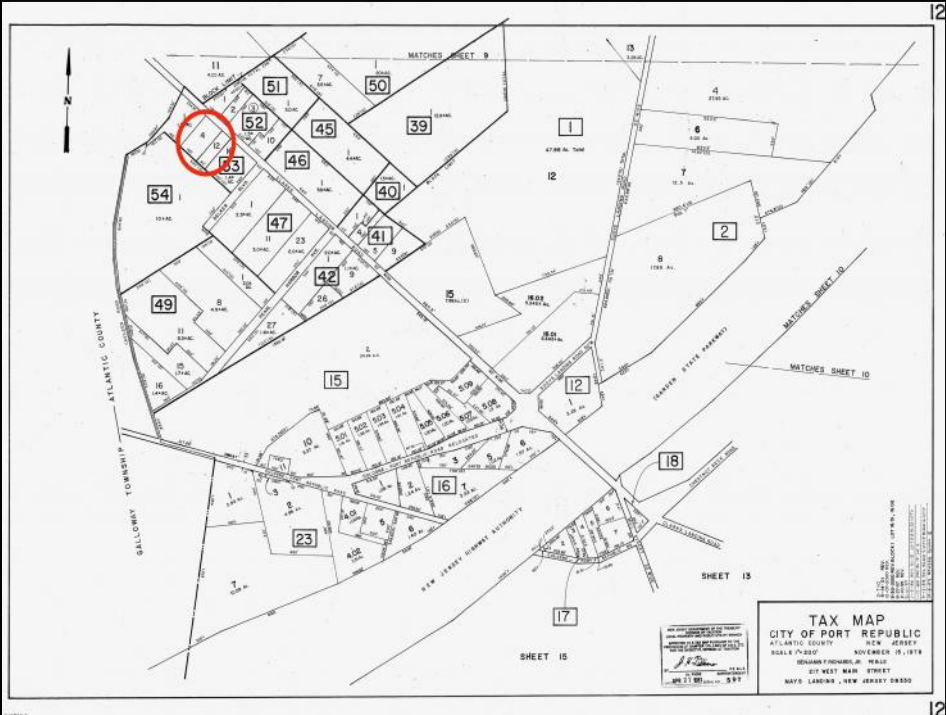


00 Clarks Landing  
Port Republic, NJ 08241

Asking \$99,000.00



### COMMENTS

Port Republic - Great location and a rare find! 2 contiguous lots on Clarks Landing Road. Lots equal 1.43 acres. Lot #4 - 160 ft. frontage. Lot #12 - 80 ft. frontage. Depth is 260ft. Wooded, All approvals including Pinelands, Zoning solely the responsibility of the buyer. Great opportunity for builder/investor or homeowner.

### PROPERTY DETAILS



Ask for Carole Lelli  
Berger Realty Inc  
109 E 55th St., Ocean City  
Call: 609-399-4211  
Email to: [cll@bergerrealty.com](mailto:cll@bergerrealty.com)

