



236 Mill  
Pleasantville, NJ 08232

Asking \$150,000.00

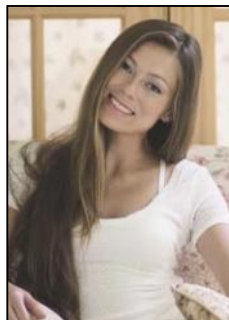


SURMLS

### COMMENTS

Over an acre of land in the middle of town, situated between Expressway and the Black Horse Pike one block from Route 9. This is a mix zoning Residential and is also part of the Urban Enterprise Zone which opens more opportunities.

### PROPERTY DETAILS



Ask for Margarita Kobilianets  
Berger Realty Inc  
1670 Boardwalk, Ocean City  
Call: 609-391-0500  
Email to: [mak@bergerrealty.com](mailto:mak@bergerrealty.com)

