

# Berger Realty

Since 1928

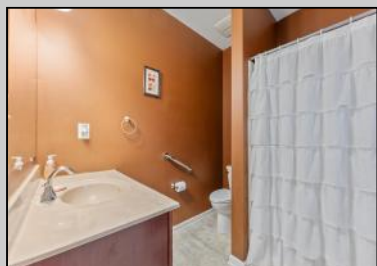


Berger Realty, Inc  
1330 Bay Avenue  
Ocean City, NJ 08226  
609-391-1330/609-391-1300  
info@bergerrealty.com



2040 Kuehnle  
Atlantic City, NJ 08401


Asking \$280,000.00



## COMMENTS

\*\*\*VENICE PARK NEW LISTING ALERT\*\*\*3 BED 2 FULL BATH\*\*\*BUILT 2016\*\*\*RAISED RANCHER\*\*\*LARGE BEDROOMS AND HIGH CEILINGS\*\*\*LARGE CORNER LOT\*\*\*\$AVE WITH \$SOLAR\*\*\*TAXES \$3,191\*\*\* KEEPING IT COOL ON KUEHNLE~ Welcome to 2040 Kuehnle Ave in the desirable Venice Park neighborhood of Atlantic City! This charming raised rancher sits proudly on a spacious corner lot, offering both privacy and a sense of openness. Inside, you'll find three generously sized bedrooms and two full bathrooms, providing ample space for family and guests. The open-concept living area is perfect for entertaining, with plenty of natural light streaming through large windows. The kitchen boasts modern appliances and ample counter space, ideal for preparing delicious meals and hosting gatherings. Outside, the corner lot provides a larger yard, perfect for outdoor activities, gardening, or simply relaxing in the fresh air. The raised design of the home not only adds to its curb appeal but also provides lower flood insurance rates! Conveniently located near local amenities, schools, and just a short drive to the beautiful beaches of Atlantic City, this home offers the perfect blend of suburban tranquility and city excitement. Don't miss the chance to make 2040 Kuehnle Ave your new home – schedule a viewing today!

## PROPERTY DETAILS

Exterior Vinyl	OutsideFeatures Handicap Access	ParkingGarage None	InteriorFeatures Smoke/Fire Alarm
	AlsoIncluded Blind	Heating Forced Air Gas-Natural Solar	Cooling Central
	<b>Ask for Thomas Horan</b> <b>Berger Realty Inc</b> <b>1330 Bay Avenue, Ocean City</b> <b>Call: 609-391-1330</b> <b>Email to: tph@bergerrealty.com</b>		
	Water Public	Sewer Public Sewer	