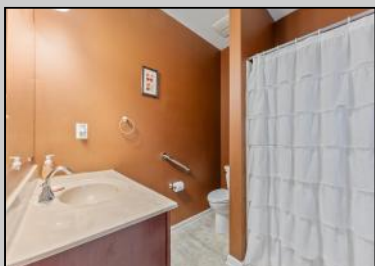




2040 Kuehnle
 Atlantic City, NJ 08401

Asking \$307,500.00



COMMENTS

VENICE PARK NEW LISTING ALERT3 BED 2 FULL BATH***BUILT 2016***RAISED RANCHER***LARGE BEDROOMS AND HIGH CEILINGS***LARGE CORNER LOT***SAVE WITH SOLAR***TAXES \$3,191*** KEEPING IT COOL ON KUEHNLE~ Welcome to 2040 Kuehnle Ave in the desirable Venice Park neighborhood of Atlantic City! This charming raised rancher sits proudly on a spacious corner lot, offering both privacy and a sense of openness. Inside, you'll find three generously sized bedrooms and two full bathrooms, providing ample space for family and guests. The open-concept living area is perfect for entertaining, with plenty of natural light streaming through large windows. The kitchen boasts modern appliances and ample counter space, ideal for preparing delicious meals and hosting gatherings. Outside, the corner lot provides a larger yard, perfect for outdoor activities, gardening, or simply relaxing in the fresh air. The raised design of the home not only adds to its curb appeal but also provides lower flood insurance rates! Conveniently located near local amenities, schools, and just a short drive to the beautiful beaches of Atlantic City, this home offers the perfect blend of suburban tranquility and city excitement. Don't miss the chance to make 2040 Kuehnle Ave your new home – schedule a viewing today!

PROPERTY DETAILS

Exterior	OutsideFeatures	ParkingGarage	InteriorFeatures
Vinyl	Handicap Access	None	Smoke/Fire Alarm
	AlsoIncluded	Heating	Cooling
	Blinds	Central Air	Central
	Berger Realty Inc	Gas-Natural	
	1330 Bay Avenue	Solar	
	Ocean City		
	Call: 609-391-1330		
	Email to: rdb@bergerrealty.com		
	Water	Sewer	
	Public	Public Sewer	



Ask for Robert Berger
 Berger Realty Inc
 1330 Bay Avenue
 Ocean City
 Call: 609-391-1330
 Email to: rdb@bergerrealty.com

