

Berger Realty

Since 1920

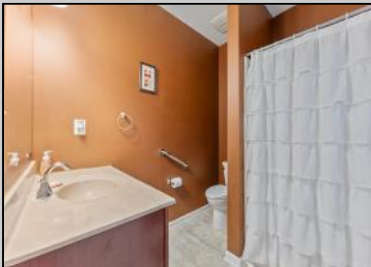


Berger Realty, Inc.
3160 Asbury Avenue
Ocean City, NJ 08226
1-877-237-4371 / 609-399-0076
info@bergerrealty.com



2040 Kuehnle
Atlantic City, NJ 08401

Asking \$280,000.00



COMMENTS

VENICE PARK NEW LISTING ALERT3 BED 2 FULL BATH***BUILT 2016***RAISED RANCHER***LARGE BEDROOMS AND HIGH CEILINGS***LARGE CORNER LOT***SAVE WITH \$SOLAR***TAXES \$3,191*** KEEPING IT COOL ON KUEHNLE~ Welcome to 2040 Kuehnle Ave in the desirable Venice Park neighborhood of Atlantic City! This charming raised rancher sits proudly on a spacious corner lot, offering both privacy and a sense of openness. Inside, you'll find three generously sized bedrooms and two full bathrooms, providing ample space for family and guests. The open-concept living area is perfect for entertaining, with plenty of natural light streaming through large windows. The kitchen boasts modern appliances and ample counter space, ideal for preparing delicious meals and hosting gatherings. Outside, the corner lot provides a larger yard, perfect for outdoor activities, gardening, or simply relaxing in the fresh air. The raised design of the home not only adds to its curb appeal but also provides lower flood insurance rates! Conveniently located near local amenities, schools, and just a short drive to the beautiful beaches of Atlantic City, this home offers the perfect blend of suburban tranquility and city excitement. Don't miss the chance to make 2040 Kuehnle Ave your new home – schedule a viewing today!

PROPERTY DETAILS

Exterior Vinyl	OutsideFeatures Handicap Access	ParkingGarage None	InteriorFeatures Smoke/Fire Alarm
AlsoIncluded BlindAsk for Michael Moss Berger Realty Inc. 3160 Asbury Avenue, Call: 609-399-0076 Email to: mvm@bergerrealty.com	Heating Gas-Natural Solar	Cooling Central	
	Water Public	Sewer Public Sewer	

