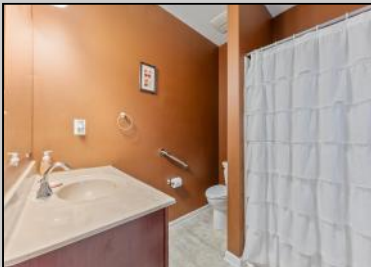




**2040 Kuehnle**  
**Atlantic City, NJ 08401**

**Asking \$280,000.00**



**COMMENTS**

\*\*\*VENICE PARK NEW LISTING ALERT\*\*\*3 BED 2 FULL BATH\*\*\*BUILT 2016\*\*\*RAISED RANCHER\*\*\*LARGE BEDROOMS AND HIGH CEILINGS\*\*\*LARGE CORNER LOT\*\*\*SAVE WITH SOLAR\*\*\*TAXES \$3,191\*\*\* KEEPING IT COOL ON KUEHNLE~ Welcome to 2040 Kuehnle Ave in the desirable Venice Park neighborhood of Atlantic City! This charming raised rancher sits proudly on a spacious corner lot, offering both privacy and a sense of openness. Inside, you'll find three generously sized bedrooms and two full bathrooms, providing ample space for family and guests. The open-concept living area is perfect for entertaining, with plenty of natural light streaming through large windows. The kitchen boasts modern appliances and ample counter space, ideal for preparing delicious meals and hosting gatherings. Outside, the corner lot provides a larger yard, perfect for outdoor activities, gardening, or simply relaxing in the fresh air. The raised design of the home not only adds to its curb appeal but also provides lower flood insurance rates! Conveniently located near local amenities, schools, and just a short drive to the beautiful beaches of Atlantic City, this home offers the perfect blend of suburban tranquility and city excitement. Don't miss the chance to make 2040 Kuehnle Ave your new home – schedule a viewing today!

**PROPERTY DETAILS**

Exterior	OutsideFeatures	ParkingGarage	InteriorFeatures
Vinyl	Handicap Access	None	Smoke/Fire Alarm
AlsoIncluded	Blind	Heating	Cooling
Ask for Joyce McManis		Central Air	Central
Berger Realty Inc.		Gas-Natural	
3160 Asbury Avenue,		Solar	
Ocean City			
Call: 609-399-0076			
Email to: jmm@bergerrealty.com			
Water	Sewer		
Public	Public Sewer		

