

Berger Realty

Since 1928

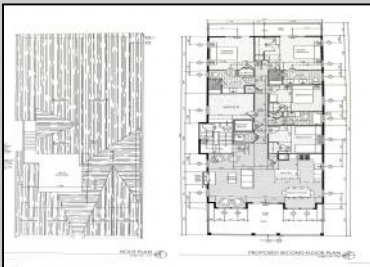
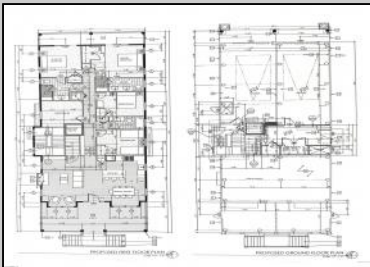


Berger Realty, Inc.
3160 Asbury Avenue
Ocean City, NJ 08226
1-877-237-4371 / 609-399-0076
info@bergerrealty.com



5533 Simpson
Ocean City, NJ 08226

Asking \$1,495,000.00



SIMPSON AVENUE (FRONT) ELEVATION

COMMENTS

This fantastic new construction project by Whale Beach Builders is located in the quiet south end of Ocean City. The first floor unit with 5 bedrooms and 3 baths will offer all the top end amenities you'd expect from this premier builder, such as Cortex flooring, a beautiful kitchen featuring stainless steel appliances, granite counters, and tile baths, all on a big 40 x 115 ft. lot Just three blocks from the beach, and within biking or walking distance to Corson's Inlet State Park, you'll have convenient access to all the south end restaurants, ice cream, mini golf and playgrounds. Hop on the jitney for a trip to the boardwalk or downtown Asbury Ave. The second floor unit is also available for \$1,695,000.

PROPERTY DETAILS

Exterior Vinyl	ParkingGarage Attached Garage One Car	OtherRooms Dining Area Great Room Laundry/Utility Room	InteriorFeatures Fireplace(s) Kitchen Center Island Master Bath Pets Allowed
Heating Gas-Natural	Cooling Ceiling Fan(s) Central	Water Public Water	Sewer Public Sewer



Ask for Tony Bono
Berger Realty Inc
3160 Asbury Avenue, Ocean City
Call: 609-399-0076
Email to: ab@bergerrealty.com

