

# Berger Realty

Since 1928

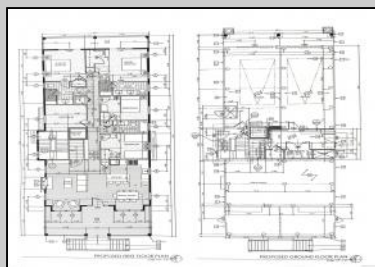
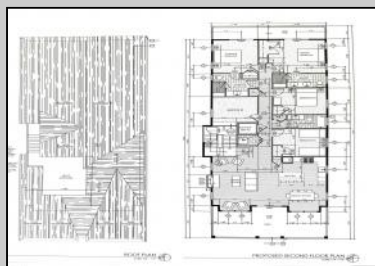


Berger Realty, Inc.  
3160 Asbury Avenue  
Ocean City, NJ 08226  
1-877-237-4371 / 609-399-0076  
info@bergerrealty.com



5535 Simpson  
Ocean City, NJ 08226

Asking \$1,695,000.00



SIMPSON AVENUE (FRONT) ELEVATION

## COMMENTS

This fantastic new construction project by Whale Beach Builders is located in the quiet south end of Ocean City. The second floor unit with 5 bedrooms and 3 and a half baths will offer all the top end amenities you'd expect from this premier builder, such as Cortex flooring, a beautiful kitchen featuring stainless steel appliances, granite counters, and tile baths, all on a big 40 x 115 ft. lot. Don't worry about the stairs - you'll have an elevator from the garage directly to your second floor home, and a roof top deck to enjoy those starry summer nights. Just three blocks from the beach, and within biking or walking distance to Corson's Inlet State Park, you'll have convenient access to all the south end restaurants, ice cream, mini golf and playgrounds. Hop on the jitney for a trip to the boardwalk or downtown Asbury Ave. First floor unit is also available for \$1,495,000.

## PROPERTY DETAILS

Exterior	ParkingGarage	OtherRooms	InteriorFeatures
Vinyl	Attached Garage	Dining Area	Cathedral Ceiling(s)
	One Car	Great Room	Elevator
		Laundry/Utility Room	Fireplace(s)
			Kitchen Center Island
			Master Bath
			Wall to Wall Carpet



Cooling  
Central Air Conditioning  
Water  
Public Water  
Sewer  
Public Sewer  
Berger Realty Inc  
3160 Asbury Avenue, Ocean City  
Call: 609-399-0076  
Email to: mk@bergerrealty.com

