

Berger Realty

Since 1928

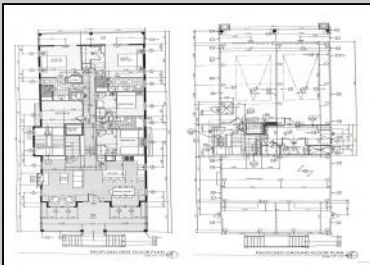
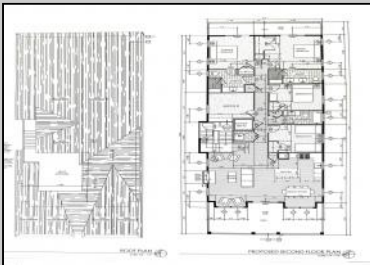


Berger Realty, Inc.
3160 Asbury Avenue
Ocean City, NJ 08226
1-877-237-4371 / 609-399-0076
info@bergerrealty.com



5535 Simpson
Ocean City, NJ 08226

Asking \$1,695,000.00



SIMPSON AVENUE (FRONT) ELEVATION

COMMENTS

This fantastic new construction project by Whale Beach Builders is located in the quiet south end of Ocean City. The second floor unit with 5 bedrooms and 3 and a half baths will offer all the top end amenities you'd expect from this premier builder, such as Cortex flooring, a beautiful kitchen featuring stainless steel appliances, granite counters, and tile baths, all on a big 40 x 115 ft. lot. Don't worry about the stairs - you'll have an elevator from the garage directly to your second floor home, and a roof top deck to enjoy those starry summer nights. Just three blocks from the beach, and within biking or walking distance to Corson's Inlet State Park, you'll have convenient access to all the south end restaurants, ice cream, mini golf and playgrounds. Hop on the jitney for a trip to the boardwalk or downtown Asbury Ave. First floor unit is also available for \$1,495,000.

PROPERTY DETAILS

Exterior Vinyl	ParkingGarage Attached Garage One Car	OtherRooms Dining Area Great Room Laundry/Utility Room	InteriorFeatures Cathedral Ceiling(s) Elevator Fireplace(s) Kitchen Center Island Master Bath Wall to Wall Carpet
-------------------	---	---	---



Cooling
Central Air Conditioning
Water
Public Water
Sewer
Public Sewer
Berger Realty Inc
3160 Asbury Avenue, Ocean City
Call: 609-399-0076
Email to: jty@bergerrealty.com

