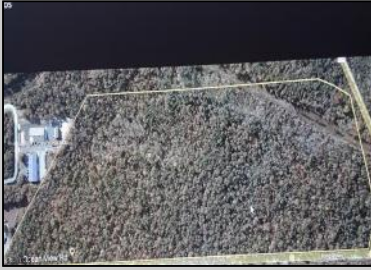


# Berger Realty

Since 1928



Berger Realty, Inc  
1330 Bay Avenue  
Ocean City, NJ 08226  
609-391-1330/609-391-1300  
info@bergerrealty.com



**425-475 Woodbine Oceanview Rd  
Ocean View, NJ 08230**

**Asking \$1,200,000.00**



#### COMMENTS

Prime Commercial Development Opportunity! 74+- acres with approximately 3300' frontage centrally located to service all of Cape May County. The land is located outside Sea Isle City and Ocean City along Route 550 (county road and truck route). Possible subdivision of 14 individual commercial lots. However, buyers can only purchase without subdivision. Each lot is estimated to be able to accommodate approximately 10,000 sf building (must verify) without road improvements. Conceptual plans of the 14 lot subdivision will be supplied upon request. The land can also accommodate a larger flex warehouse building.

#### PROPERTY DETAILS



Ask for Dave Zelinski  
Berger Realty Inc  
1330 Bay Avenue, Ocean City  
Call: 609-391-1330  
Email to: [djz@bergerrealty.com](mailto:djz@bergerrealty.com)

