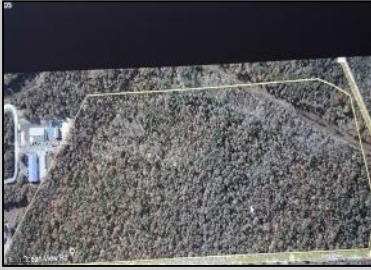




425-475 Woodbine Oceanview Rd  
Ocean View, NJ 08230

Asking \$1,200,000.00



### COMMENTS

Prime Commercial Development Opportunity! 74+- acres with approximately 3300' frontage centrally located to service all of Cape May County. The land is located outside Sea Isle City and Ocean City along Route 550 (county road and truck route). Possible subdivision of 14 individual commercial lots. However, buyers can only purchase without subdivision. Each lot is estimated to be able to accommodate approximately 10,000 sf building (must verify) without road improvements. Conceptual plans of the 14 lot subdivision will be supplied upon request. The land can also accommodate a larger flex warehouse building.

### PROPERTY DETAILS



Ask for Bob Wilkins  
Berger Realty Inc  
109 E 55th St., Ocean City  
Call: 609-399-4211  
Email to: bw@bergerrealty.com

