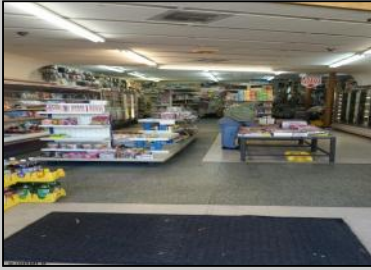




1410 Atlantic
 Atlantic City, NJ 08401

Asking \$399,000.00



COMMENTS

Atlantic Avenue 1400 Block between New York Ave. and Tennessee Avenues. Very good retail location with excellent foot traffic. Store has 25' frontage with a depth of 150' to rear roadway for access and deliveries. First floor is 3,750 SF ideal for all retail and office uses. Property was approved by the CRDA in 2023 for a Cannabis retail dispensary and has architectural plans. There are approvals for the location and plans for construction that are subject to a punch list of items to be addressed to complete the approval process. Seller would consider providing financing to a qualified buyer at 5% interest rate with 50% of the purchase price down payment or 6.5% interest rate with 35% down payment. Seller's are serious about Selling the property.

PROPERTY DETAILS

Exterior Brick See Remarks Stone	OutsideFeatures Security Light/System See Remarks	ParkingGarage None	InteriorFeatures 220 Volt Electricity Display Windows Restroom Smoke/Fire Alarm Storage Three Phase Electric
Heating Baseboard	Cooling Central	HotWater Gas	Water Public



Ask for Alexandra Caulfield
 Berger Realty Inc
 3160 Asbury Avenue, Ocean City
 Call: 609-399-0076
 Email to: aic@bergerrealty.com

