



27 Kentucky
Atlantic City, NJ 08401

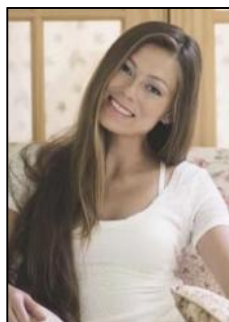
Asking \$75,000.00



COMMENTS

Buildable lot in the CBD & New Tourism District. The lot is 50 x 87 dimensions, or 4,350+-sf. The prior use was a 30 unit hotel, with 3 apartments, 1 office, and 1 store. Zoning allows for Mixed Use, Multifamily or pave and use for parking lot. Frontage on S Kentucky & Belfield Ave. Located near Stockton's AC Campus.

PROPERTY DETAILS



Ask for Margarita Kobilianets
Berger Realty Inc
1670 Boardwalk, Ocean City
Call: 609-391-0500
Email to: mak@bergerrealty.com

