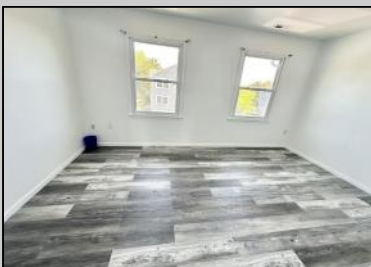




500 California Ave  
 Pleasantville, NJ 08232

Asking \$209,900.00



**COMMENTS**

\*\*\*\*\*WELCOME HOME TO CALIFORNIA\*\*\*\*\* MUST BE CONVENTIONAL FINANCING WITH 10% OR MORE DOWN\*\*\*\*\* THIS RECENTLY SUBSTANTIALLY UPDATED 3 LEVEL END UNIT TOWNHOUSE ON THE ABSECON BORDER OFFERS A QUIET AND SERENE LOCATION ONE OF PVILLES BEST AREAS. FEATURES 2 BEDROOMS COULD BE A 3rd ON FIRST FLOOR 1.5 FULL BATHS AND LARGE UPPER OUTDOOR DECK. MINUTES TO CASINOS BOARDS AND WORLD FAMOUS BEACHES PROFESSIONALLY PAINTED, NEW KITCHEN, NEW VINYL PLANK FLOORING THROUGHOUT NEW WINDOWS ABD SO MUCH MORE. LOW TAXES, GREAT LOCATION AND REASONABLE HOA FEES MAKES THIS 3 STORY TOWNHOME A BEST BUY!

**PROPERTY DETAILS**

|                                      |                       |  |                                  |
|--------------------------------------|-----------------------|--|----------------------------------|
| Exterior<br>Vinyl                    | ParkingGarage<br>None | OtherRooms<br>Den/TV Room<br>Dining Area | InteriorFeatures<br>Pets Allowed |
| Heating<br>Forced Air<br>Gas-Natural | Cooling<br>Central    | HotWater<br>Gas                          | Water<br>Public Water            |



Ask for Sheilah Baran  
 Berger Realty Inc  
 1330 Bay Avenue, Ocean City  
 Call: 609-391-1330  
 Email to: sdb@bergerrealty.com

