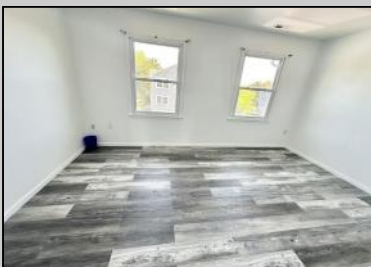




**500 California Ave  
Pleasantville, NJ 08232**

**Asking \$209,900.00**

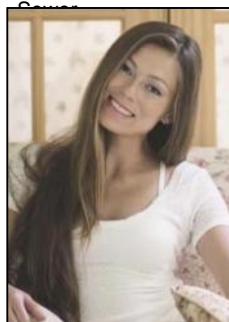


### COMMENTS

\*\*\*\*\*WELCOME HOME TO CALIFORNIA\*\*\*\*\* MUST BE CONVENTIONAL FINANCING WITH 10% OR MORE DOWN\*\*\*\*\* THIS RECENTLY SUBSTANTIALLY UPDATED 3 LEVEL END UNIT TOWNHOUSE ON THE ABSECON BORDER OFFERS A QUIET AND SERENE LOCATION ONE OF PVILLES BEST AREAS. FEATURES 2 BEDROOMS COULD BE A 3rd ON FIRST FLOOR 1.5 FULL BATHS AND LARGE UPPER OUTDOOR DECK. MINUTES TO CASINOS BOARDS AND WORLD FAMOUS BEACHES PROFESSIONALLY PAINTED, NEW KITCHEN, NEW VINYL PLANK FLOORING THROUGHOUT NEW WINDOWS AND SO MUCH MORE. LOW TAXES, GREAT LOCATION AND REASONABLE HOA FEES MAKES THIS 3 STORY TOWNHOME A BEST BUY!

### PROPERTY DETAILS

Exterior Vinyl	ParkingGarage None	OtherRooms Den/TV Room Dining Area	InteriorFeatures Pets Allowed
Heating Forced Air Gas-Natural	Cooling Central	HotWater Gas	Water Public Water



Ask for Margarita Kobilianets  
Berger Realty Inc  
1670 Boardwalk, Ocean City  
Call: 609-391-0500  
Email to: [mak@bergerrealty.com](mailto:mak@bergerrealty.com)

