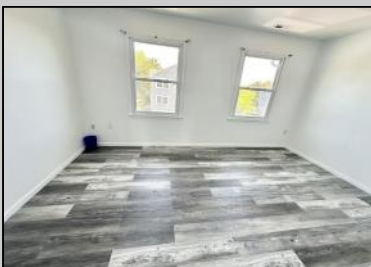




500 California Ave  
 Pleasantville, NJ 08232

Asking \$209,900.00



**COMMENTS**

\*\*\*\*\*WELCOME HOME TO CALIFORNIA\*\*\*\*\* MUST BE CONVENTIONAL FINANCING WITH 10% OR MORE DOWN\*\*\*\*\* THIS RECENTLY SUBSTANTIALLY UPDATED 3 LEVEL END UNIT TOWNHOUSE ON THE ABSECON BORDER OFFERS A QUIET AND SERENE LOCATION ONE OF PVILLES BEST AREAS. FEATURES 2 BEDROOMS COULD BE A 3rd ON FIRST FLOOR 1.5 FULL BATHS AND LARGE UPPER OUTDOOR DECK. MINUTES TO CASINOS BOARDS AND WORLD FAMOUS BEACHES PROFESSIONALLY PAINTED, NEW KITCHEN, NEW VINYL PLANK FLOORING THROUGHOUT NEW WINDOWS AND SO MUCH MORE. LOW TAXES, GREAT LOCATION AND REASONABLE HOA FEES MAKES THIS 3 STORY TOWNHOME A BEST BUY!

**PROPERTY DETAILS**

Exterior Vinyl	ParkingGarage None	OtherRooms Den/TV Room Dining Area	InteriorFeatures Pets Allowed
Heating Forced Air Gas-Natural	Cooling Central	HotWater Gas	Water Public Water



Ask for Lauren Greiner  
 Berger Realty Inc  
 3160 Asbury Avenue, Ocean City  
 Call: 609-399-0076  
 Email to: lmg@bergerrealty.com

