

Berger Realty

Since 1928

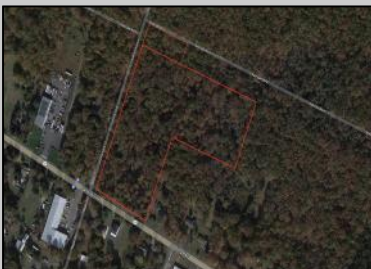


Berger Realty, Inc.
3160 Asbury Avenue
Ocean City, NJ 08226
1-877-237-4371 / 609-399-0076
info@bergerrealty.com



Harding
Buena Vista Township, NJ 08310

Asking \$300,000.00



COMMENTS

Prime highway-frontage land with exceptional visibility now available! Located on Harding Highway, this 12.26 acre property offers unmatched exposure to high daily traffic, making it ideal for commercial development. Featuring easy access from both directions, flat terrain, and all essential utilities on-site. Don't miss out on this chance to secure a highly visible, high-potential piece of real estate! Call today for more details!

PROPERTY DETAILS



Ask for Tom Melchionni
Berger Realty Inc
3160 Asbury Avenue, Ocean City
Call: 609-399-0076
Email to: tom@bergerrealty.com

