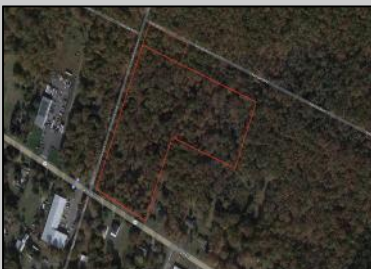


# Berger Realty

• Since 1928 •



Berger Realty, Inc  
1330 Bay Avenue  
Ocean City, NJ 08226  
609-391-1330/609-391-1300  
✉ [info@bergerrealty.com](mailto:info@bergerrealty.com)



**Harding**  
**Buena Vista Township, NJ 08310**

**Asking \$300,000.00**



#### COMMENTS

Prime highway-frontage land with exceptional visibility now available! Located on Harding Highway, this 12.26 acre property offers unmatched exposure to high daily traffic, making it ideal for commercial development. Featuring easy access from both directions, flat terrain, and all essential utilities on-site. Don't miss out on this chance to secure a highly visible, high-potential piece of real estate! Call today for more details!

#### PROPERTY DETAILS



Ask for Phillip Bellucci  
Berger Realty Inc  
1330 Bay Avenue, Ocean City  
Call: 609-391-1330  
Email to: [pjb@bergerrealty.com](mailto:pjb@bergerrealty.com)

