



**182 Pebble Beach
Mays Landing, NJ 08330**

Asking \$219,900.00



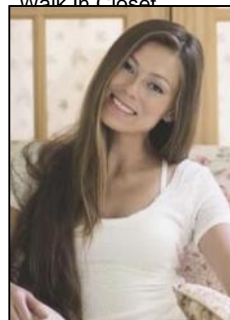
COMMENTS

182 Pebble Beach Drive is your perfect opportunity for an ideal 55+ lifestyle at The Fairways in Mays Landing. This beautiful 2 bedroom with 2 full bathroom is nestled along a serene golf course like setting. The front covered porch graciously welcomes all. You'll love the bright living/dining great room with it's stylish decor. The expansive eat-in kitchen has an abundant amount of cabinetry & counter space for all your cooking needs. The Main En Suite is an oasis with it's nicely appointed bedroom furnishings, large bathroom & walk-in closet. The second bedroom has endless possibilities as a guest room, office or flex space. A nice size laundry room with a side entrance to the attached garage. Quick access to both the Atlantic City Expressway & the Garden State Parkway make it desirable for easy commutes to all the Shore points, Philadelphia & North Jersey. View now via the 3D Tour link then book your showing today!

PROPERTY DETAILS

Exterior Vinyl	OutsideFeatures Porch	ParkingGarage Attached Garage	OtherRooms Eat In Kitchen Laundry/Utility Room Primary BR on 1st floor
-------------------	--------------------------	----------------------------------	---

InteriorFeatures Skylight(s) Walk In Closet	AppliancesIncluded Dishwasher Dryer Electric Stove	AlsoIncluded Blinds Partially Furnished See Remarks	Basement Crawl Space
---	---	--	-------------------------



Ask for Margarita Kobilianets
Berger Realty Inc
1670 Boardwalk, Ocean City
Call 609-391-0500
Email to: mak@bergerrealty.com

