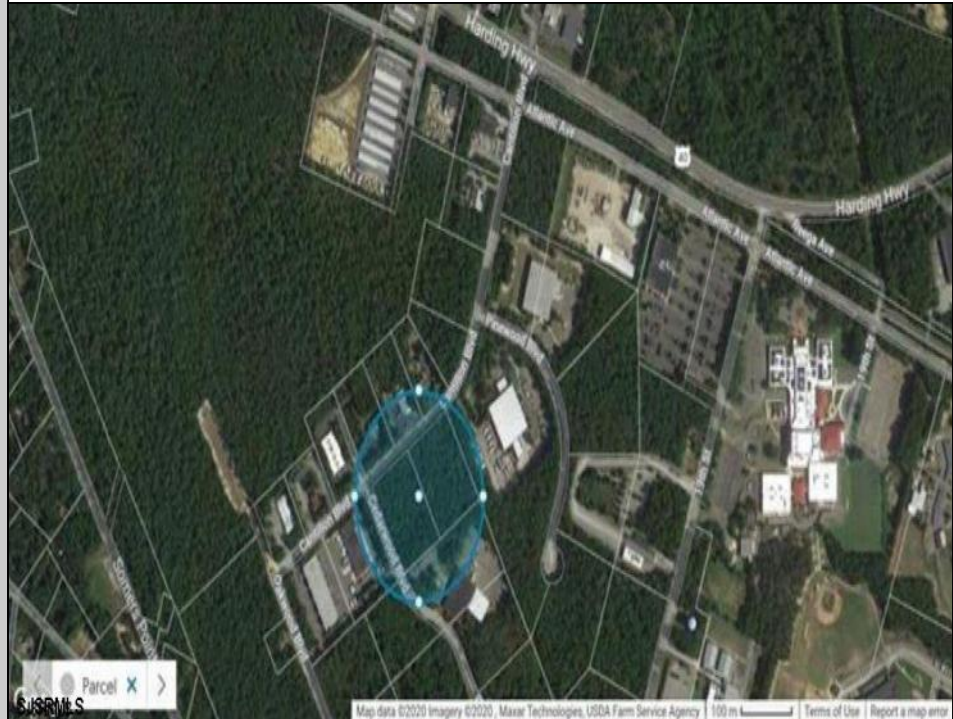




1410 Cantillon Blvd
Mays Landing, NJ 08330

Asking \$560,000.00



COMMENTS

Hamilton Twp. fully approved lot in Atlantic County. Hamilton Business Park allows for offices, warehouses, light manufacturing, medical facility, banks, gyms, general business. (all subject to approvals) This 5.33 Acre lot has all approvals to build a 40,000 sq. ft building for an approved business. All Pinelands leg work has been completed and approved ready to start construction with approved building plans. As per township of Hamilton ammendment to the Redevelopment plan, County of Atlantic, State of NJ to permit Cannabis Cultivation subject to following special requirements of the AG district. Offering 5 year tax incentive program for construction in the Industrial Business Park Zone.

PROPERTY DETAILS



Ask for Rodman Pierce
Berger Realty Inc
109 E 55th St., Ocean City
Call: 609-399-4211
Email to: rpp@bergerrealty.com

