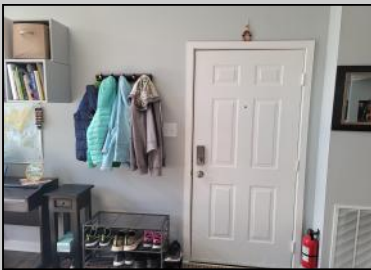
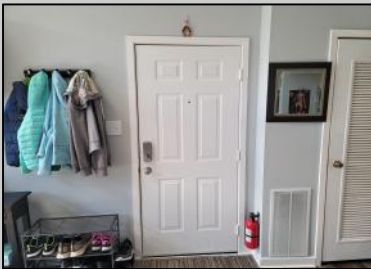




**282 Heather Croft**  
**Egg Harbor Township, NJ 08234**

**Asking \$179,600.00**



**COMMENTS**

Do not miss this rare, top floor unit in desirable Heather Croft Condominium, facing the forest and allowing you to enjoy a nature scene. The property is located at a super quiet and tranquil part of the complex. This freshly painted, beautifully updated unit is priced right on the money. The place was totally renovated 5 years ago. It features stainless steel appliances, 42 inch hardwood cabinets and granite countertop and a deep sink. Cathedral ceilings, allow a lot of light to penetrate in the living room and along with the wood pattern waterproof laminate floor give a cozy feeling of warmth and comfort. High resolution surveillance cameras give you a feeling of security and ability to monitor your home when not at home. The vanity has granite countertop. The bathtub was also replaced with new and wider one. Easily accessible additional space above the apartment can be used as storage. Plenty of parking space available only on that side of Heather Croft. This is an ideal situation for an investor! Seller is licensed realtor in NJ.

**PROPERTY DETAILS**

Exterior Vinyl	ParkingGarage None	InteriorFeatures Skylight	Heating Forced Air Gas-Natural
Cooling Central Electric	HotWater Electric	Water Public Water	Sewer Public Sewer



Ask for John Clarke  
 Berger Realty Inc  
 3160 Asbury Avenue, Ocean City  
 Call: 609-399-0076  
 Email to: jwc@bergerrealty.com

