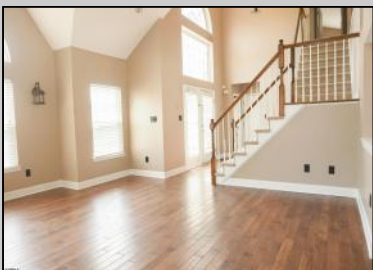


**412 Glenn Ave
Egg Harbor Township, NJ 08234**

Asking \$580,000.00



COMMENTS

Well-appointed 4BR & 2.5BA, 2 car garage home situated on a large corner lot in the Cedar Crest! The house features the ever-so-durable, hickory hardwood floors throughout the main level, and brand new wall to wall carpeting on the second level. Overlooking the spacious fenced in rear yard, the upgraded gourmet kitchen has granite counters, stainless steel appliances, and custom wood cabinetry with plenty of storage. There is even a walk in pantry closet to the side of kitchen to store all the dry snacks out of sight. Large newly renovated deck is just off the family room and there is a children's play area in backyard that was installed with a swing set inside its own mulched area within perfect view from the kitchen sink! Formal living room features soaring vaulted ceilings with upgraded light fixtures all throughout the home. Primary bedroom offers 2 large walk in closets and vaulted ceilings. Large full basement offers tons of extra possibilities. Garage opener equipment is brand new, just replaced. Move in ready!

PROPERTY DETAILS

Exterior Concrete Stone Stucco	OutsideFeatures Deck Fenced Yard Sidewalks	ParkingGarage Attached Garage Auto Door Opener Two Car	OtherRooms Breakfast Nook Den/TV Room Dining Room Great Room Laundry/Utility Room Pantry Recreation/Family Storage Attic
InteriorFeatures Carbon Monoxide Detector Cathedral Ceiling Kitchen Center Island Smoke/Fire Alarm Walk In Closet	AppliancesIncluded Dishwasher Disposal Dryer Gas Stove Microwave Refrigerator Washer	AlsoIncluded Blinds	Basement 6 Ft. or More Head Room Partial
Heating Gas-Natural Multi-Zoned	Cooling Central Multi-Zoned	HotWater Gas	Water Public

Berger Realty

• Since 1928 •



Berger Realty, Inc
1330 Bay Avenue
Ocean City, NJ 08226
609-391-1330/609-391-1300
✉ info@bergerrealty.com



Sewer
Public Sewer



Ask for Dave Zelinski
Berger Realty Inc
1330 Bay Avenue, Ocean City
Call: 609-391-1330
Email to: djz@bergerrealty.com

