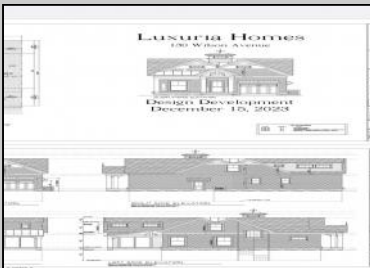
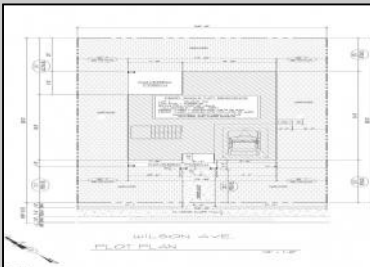




130 Wilson Ave
 Linwood, NJ 08221



Asking \$879,000.00



COMMENTS

Brand new Super Custom construction right smack in the Heart of Linwood and middle of all the Bikepath action! This unseen design and floorplan are over the top special relative to any past offerings in the history of Linwood's new construction market... (except this builder's other two (2) at the intersection of Maple & Bikepath). 3 of the 4 bedrooms each contain private ensuite bathrooms, the wide-open flow captures light-air and lends a close-knit family lifestyle, while still offering a full basement to create additional recreational space, office, gym, and/or pubroom. The Rich-Classic style, including both the interior and exterior finishes capture, and surpass even the most discerning requirements, prerequisites and refinements of today's educated buyers. A possible first floor bedroom with 4th full bath being centrally located on First Floor. Two (2) covered porches (Front for Sunny Iced tea sippin'), the large rear porch is 14 x 10...so plays like a seasonal outdoor room! Single-car attached garage flows into oversized mudroom w/bench and shelves. This is a uniquely rare opportunity to own ultra-custom real estate in an A+ neighborhood and premium desirable community!

PROPERTY DETAILS

Exterior Vinyl	OutsideFeatures Deck Patio Porch Sprinkler System	ParkingGarage One Car	OtherRooms Breakfast Nook Eat In Kitchen Great Room Laundry/Utility Room Pantry Storage Attic
 Ask for Brandon Howell Berger Realty Inc 3160 Asbury Avenue, Ocean City Call 609-399-0076 Email: bah@bergerrealty.com	Appliances Included Dishwasher Disposal Microwave Refrigerator	Basement Full	 Sewer Public Sewer
Central Multi-Zoned	HotWater Gas	Water Public	