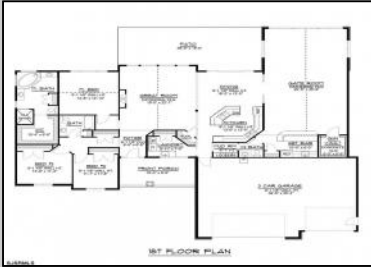


197 Betsey Scull
Egg Harbor Township, NJ 08234

Asking \$749,000.00



COMMENTS

IMMERSE YOURSELF IN LUXURY! BRAND NEW CUSTOM SPRAWLING RANCH in sought after EGG HARBOR TOWNSHIP! WHERE PRIVATE, COUNTRY LIVING MEETS STATELY ONE OF A KIND, EXQUISITE CUSTOM NEW CONSTRUCTION by none other than Henn Nardini Custom Builders! Curious about the various models available for this APPROVED, SHOVEL READY SLICE OF PRISTINE COUNTRY HEAVEN? We invite you to use the QR code in our listing photos for all model options available for this particular lot. And, as if that wasn't exciting enough, you're in time to potentially select your own finishes and fixtures! Nestled on the corner of Betsey Scull Road and Somers Point/Mays Landing Road, this OUTSTANDING piece of property is located within a rock's throw to the Great Egg Harbor River, with numerous water access sites nearby, less than 20 mins from NJ Beaches, yet close to all of life's everyday essentials, YOU WILL NOT NEED TO SEARCH FURTHER! CALL TODAY FOR YOUR OWN PRIVATE CONSULTATION!

PROPERTY DETAILS

Exterior See Remarks	OutsideFeatures Curbs Patio Paved Road Porch	ParkingGarage Attached Garage Auto Door Opener See Remarks Two Car	OtherRooms Den/TV Room Dining Area Dining Room Eat In Kitchen Great Room Laundry/Utility Room Library/Study Pantry Primary BR on 1st floor Recreation/Family Storage Attic
AppliancesIncluded Dishwasher Dryer Gas Stove Microwave Refrigerator Self Cleaning Oven Washer	Heating Forced Air Gas-Natural See Remarks	Cooling Ceiling Fan(s) Central Gas	HotWater Gas Tankless-gas

Berger Realty

• Since 1928 •



Ocean 17
1670 Boardwalk
Ocean City, NJ 08226
609-391-0500



✉ oc17@BergerRealty.com

Water
Private
Well

Sewer
Private
Septic



Ask for Troy Eggie
Berger Realty Inc
1670 Boardwalk, Ocean City
Call: 609-391-0500
Email to: tde@bergerrealty.com

