

197 Betsey Scull  
Egg Harbor Township, NJ 08234

Asking \$749,000.00



COMMENTS

IMMERSE YOURSELF IN LUXURY! BRAND NEW CUSTOM SPRAWLING RANCH in sought after EGG HARBOR TOWNSHIP! WHERE PRIVATE, COUNTRY LIVING MEETS STATELY ONE OF A KIND, EXQUISITE CUSTOM NEW CONSTRUCTION by none other than Henn Nardini Custom Builders! Curious about the various models available for this APPROVED, SHOVEL READY SLICE OF PRISTINE COUNTRY HEAVEN? We invite you to use the QR code in our listing photos for all model options available for this particular lot. And, as if that wasn't exciting enough, you're in time to potentially select your own finishes and fixtures! Nestled on the corner of Betsey Scull Road and Somers Point/Mays Landing Road, this OUTSTANDING piece of property is located within a rock's throw to the Great Egg Harbor River, with numerous water access sites nearby, less than 20 mins from NJ Beaches, yet close to all of life's everyday essentials, YOU WILL NOT NEED TO SEARCH FURTHER! CALL TODAY FOR YOUR OWN PRIVATE CONSULTATION!

PROPERTY DETAILS

Exterior	OutsideFeatures	ParkingGarage	OtherRooms
See Remarks	Curbs	Attached Garage	Den/TV Room
	Patio	Auto Door Opener	Dining Area
	Paved Road	See Remarks	Dining Room
	Porch	Two Car	Eat In Kitchen
			Great Room
			Laundry/Utility Room
			Library/Study
			Pantry
			Primary BR on 1st floor
			Recreation/Family
			Storage Attic
AppliancesIncluded	Heating	Cooling	HotWater
Dishwasher	Forced Air	Ceiling Fan(s)	Gas
Dryer	Gas-Natural	Central	Tankless-gas
Gas Stove	See Remarks	Gas	
Microwave			
Refrigerator			
Self Cleaning Oven			
Washer			

# Berger Realty

• Since 1928 •



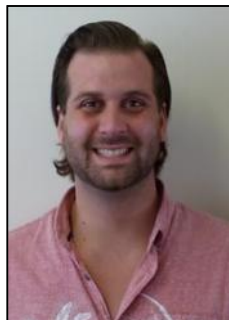
Ocean 17  
1670 Boardwalk  
Ocean City, NJ 08226  
609-391-0500

✉ [oc17@BergerRealty.com](mailto:oc17@BergerRealty.com)



Water  
Private  
Well

Sewer  
Private  
Septic



Ask for Colin Halliday  
Berger Realty Inc  
1670 Boardwalk, Ocean City  
Call: 609-391-0500  
Email to: [ceh@bergerrealty.com](mailto:ceh@bergerrealty.com)

