



30-58 Chicago Ave
Egg Harbor City, NJ 08215

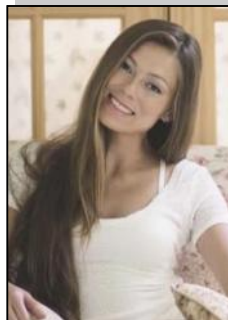
Asking \$429,900.00



COMMENTS

Prime Lot/Land in Egg Harbor City: Ideal for Lucrative Business Ventures Welcome to a Great opportunity in Egg Harbor City! This expansive lot/land presents an incredible canvas for entrepreneurs and investors seeking to capitalize on the area's upward trajectory and vibrant business environment. Key Features: 1. **Strategic Location**: Situated in an up-and-coming area, this property enjoys proximity to key commercial hubs, major transportation routes, and a growing customer base. 2. **Versatile Zoning**: Zoned for commercial/industrial purposes, this lot/land offers flexibility for various business ventures, such as retail outlets, warehouses, manufacturing facilities, or mixed-use developments. 3. **Ample Space**: With over 1 Acre of land, there's plenty of room to actualize your vision, whether it's constructing a state-of-the-art facility or creating a dynamic commercial complex. 4. **Investment Potential**: Egg Harbor City's rising prominence makes this investment highly promising, ensuring long-term value appreciation and robust returns on investment. 5. **Infrastructure Ready**: Benefit from existing infrastructure like utilities, road access, and nearby amenities, streamlining the development process and enhancing operational efficiency. 6. **Thriving Community**: Join a vibrant community of businesses and residents, fostering networking opportunities, customer engagement, and a supportive economic ecosystem. Don't miss out on this rare chance to establish your business presence in one of Egg Harbor City's most promising areas. Seize the opportunity today and unlock boundless potential for success!

PROPERTY DETAILS



Ask for Margarita Kobilianets
Berger Realty Inc
1670 Boardwalk, Ocean City
Call: 609-391-0500
Email to: mak@bergerrealty.com

