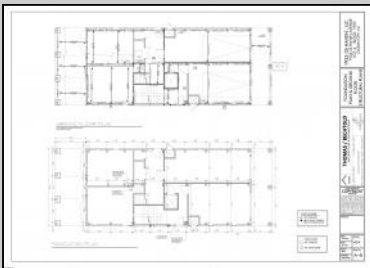
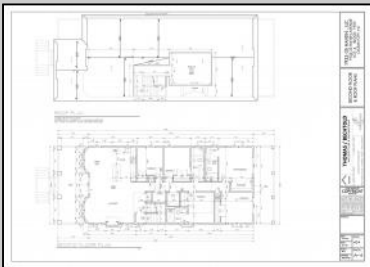




**1935 Haven Avenue**  
**Ocean City, NJ 08226**

**Asking \$1,599,000.00**



## 1933-35 HAVEN , LLC

1933-35 HAVEN AVENUE

HAVEN AVENUE ELEVATOR

### Working Plans

February 13, 2024

1933-35 HAVEN, LLC  
 1933-35 HAVEN AVENUE  
 OCEAN CITY, NJ

TITLE SHEET

THOMAS / BECHTOLD  
 ARCHITECTURE & ENGINEERING

COPYRIGHT

DATE: 2/13/24  
 SHEET NO: 424  
 SCALE: T=1

**LIST OF CHANGES**

NO.	DATE	DESCRIPTION
1	2/13/24	ISSUE FOR PERMITTING
2	2/13/24	ISSUE FOR PERMITTING
3	2/13/24	ISSUE FOR PERMITTING
4	2/13/24	ISSUE FOR PERMITTING
5	2/13/24	ISSUE FOR PERMITTING
6	2/13/24	ISSUE FOR PERMITTING
7	2/13/24	ISSUE FOR PERMITTING
8	2/13/24	ISSUE FOR PERMITTING
9	2/13/24	ISSUE FOR PERMITTING
10	2/13/24	ISSUE FOR PERMITTING
11	2/13/24	ISSUE FOR PERMITTING
12	2/13/24	ISSUE FOR PERMITTING
13	2/13/24	ISSUE FOR PERMITTING
14	2/13/24	ISSUE FOR PERMITTING
15	2/13/24	ISSUE FOR PERMITTING
16	2/13/24	ISSUE FOR PERMITTING
17	2/13/24	ISSUE FOR PERMITTING
18	2/13/24	ISSUE FOR PERMITTING
19	2/13/24	ISSUE FOR PERMITTING
20	2/13/24	ISSUE FOR PERMITTING
21	2/13/24	ISSUE FOR PERMITTING
22	2/13/24	ISSUE FOR PERMITTING
23	2/13/24	ISSUE FOR PERMITTING
24	2/13/24	ISSUE FOR PERMITTING
25	2/13/24	ISSUE FOR PERMITTING
26	2/13/24	ISSUE FOR PERMITTING
27	2/13/24	ISSUE FOR PERMITTING
28	2/13/24	ISSUE FOR PERMITTING
29	2/13/24	ISSUE FOR PERMITTING
30	2/13/24	ISSUE FOR PERMITTING
31	2/13/24	ISSUE FOR PERMITTING
32	2/13/24	ISSUE FOR PERMITTING
33	2/13/24	ISSUE FOR PERMITTING
34	2/13/24	ISSUE FOR PERMITTING
35	2/13/24	ISSUE FOR PERMITTING
36	2/13/24	ISSUE FOR PERMITTING
37	2/13/24	ISSUE FOR PERMITTING
38	2/13/24	ISSUE FOR PERMITTING
39	2/13/24	ISSUE FOR PERMITTING
40	2/13/24	ISSUE FOR PERMITTING
41	2/13/24	ISSUE FOR PERMITTING
42	2/13/24	ISSUE FOR PERMITTING
43	2/13/24	ISSUE FOR PERMITTING
44	2/13/24	ISSUE FOR PERMITTING
45	2/13/24	ISSUE FOR PERMITTING
46	2/13/24	ISSUE FOR PERMITTING
47	2/13/24	ISSUE FOR PERMITTING
48	2/13/24	ISSUE FOR PERMITTING
49	2/13/24	ISSUE FOR PERMITTING
50	2/13/24	ISSUE FOR PERMITTING

**BUILDING DATA**

NO. OF FLOORS: 2  
 NO. OF UNITS: 1  
 TOTAL BLDG. AREA: 3,142 SF  
 TOTAL FLOOR AREA: 3,142 SF  
 TOTAL GARAGE AREA: 400 SF  
 TOTAL LOT AREA: 10,000 SF  
 TOTAL LOT AREA: 10,000 SF  
 TOTAL LOT AREA: 10,000 SF

**COMMENTS**

Stunning New Construction by Clark Edward Development! This new construction property has incredible amenities throughout! Enter through your private entrance. The open layout is home to a great room with vaulted ceilings and an open kitchen, complete with a center island, state-of-the-art appliances, quartz countertops, upgraded cabinetry, and ceramic tile backsplash. This area is open to the dining room and living room, here you can spend countless hours entertaining and unwinding after long days spent at the beach! You will find a laundry room with five bedrooms and three full bathrooms down the hall. The Upgrades include luxury vinyl plank flooring throughout, gas heat, central air, gas fireplace, tankless water heater, recessed lighting, and ELEVATOR! The exterior highlights are a front and rear deck, ROOF TOP deck, outside shower, storage shed, parking pad, and attached garage. Are you looking for a modern and luxury experience? This property has it all! Taxes have not been assessed yet. See associated docs for plans.

**PROPERTY DETAILS**

Exterior Vinyl	ParkingGarage Attached Garage Auto Door Opener One Car	OtherRooms Den/TV Room Dining Area Eat In Kitchen Great Room Laundry/Utility Room Recreation/Family	InteriorFeatures Elevator Fireplace(s) Hardwood Floors Kitchen Center Island Master Bath
----------------	--	--	--



Ask for Barbara Fasy  
 Berger Realty Inc  
 1330 Bay Avenue, Ocean City  
 Call: 609-391-1330  
 Email to: bf@bergerrealty.com

