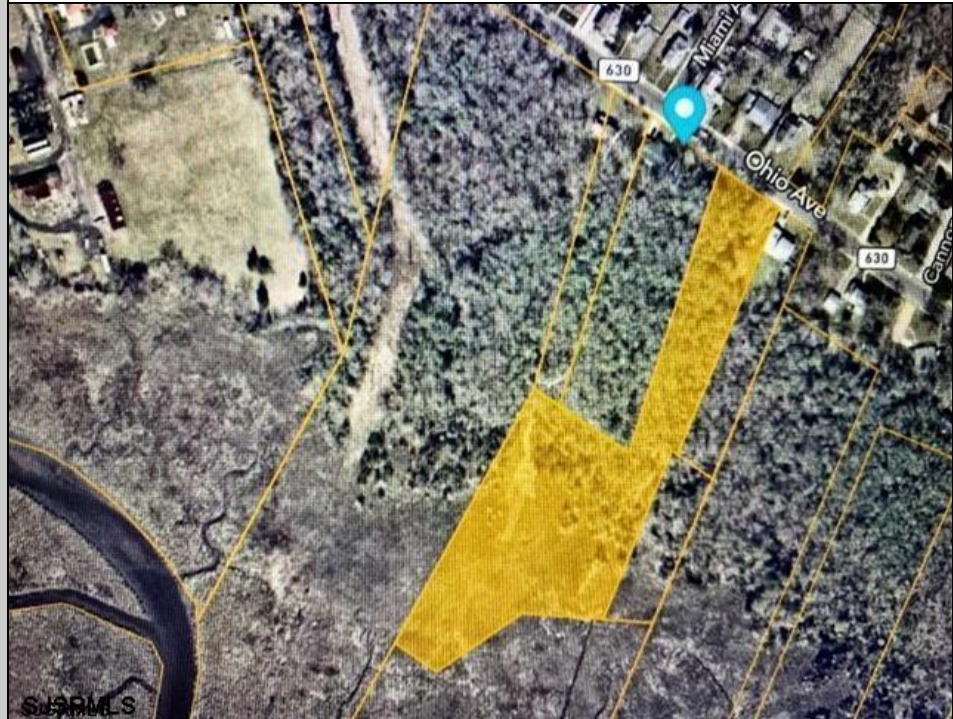
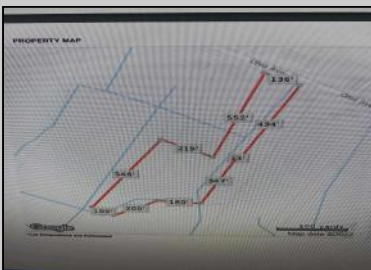




00 Ohio Ave Ave Ave Ave  
Absecon, NJ 08201

Asking \$25,000.00



### COMMENTS

Partially Buildable Lot. Frontage of 136 (see attached pictures for lot size/details). Buyer must contact state and order wetlands deliniation to see the EXACT location where wetlands begin in the rear section of the lot.

### PROPERTY DETAILS



Ask for Laryn Crisci  
Berger Realty Inc  
1670 Boardwalk, Ocean City  
Call: 609-391-0500  
Email to: [lrc@bergerrealty.com](mailto:lrc@bergerrealty.com)

