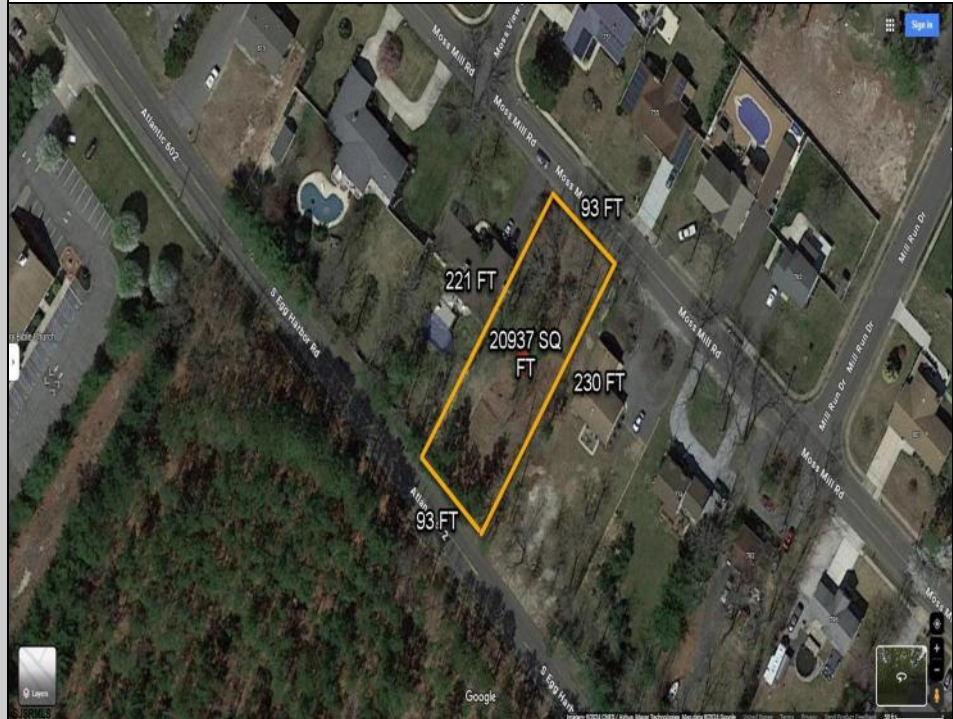


**758 Moss Mill  
Hammonton, NJ 08037**

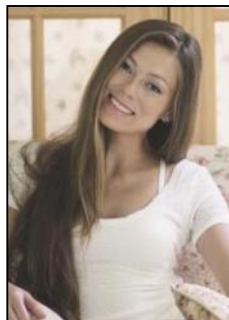
**Asking \$125,000.00**



### COMMENTS

There's one way to combat against low inventory. Build your own! This half acre lot (.48) is situated on Moss Mill Road and backs up to Egg Harbor Road. It's surrounded by well-maintained homes, including a premier development around the corner. It's less than a minute drive to the Hammonton Lake Park, Downtown Hammonton and the White Horse Pike. Water/Sewer hookup are available. Buyer responsible for all certifications and inspections at buyer's sole cost and expense. 758 Moss Mill was previously approved by Pinelands. Call Today!

### PROPERTY DETAILS



Ask for Margarita Kobilianets  
Berger Realty Inc  
1670 Boardwalk, Ocean City  
Call: 609-391-0500  
Email to: [mak@bergerrealty.com](mailto:mak@bergerrealty.com)

