



**11 CRESTMONT DRIVE**  
Somers Point, NJ 08244

**Asking \$399,900.00**



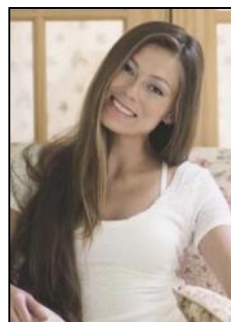
SJSRMLS

### COMMENTS

SPACIOUS DUPLEX WITH 2 BEDROOMS AND 1 BATH ON EACH LEVEL AND SEPARATE METERS IN A GREAT SOMERS POINT LOCATION MINUTES FROM OCEAN CITY. TENANT OCCUPIED WITH MONTH TO MONTH LEASES. BUYER AGREES TO PURCHASE PROPERTY TENANT OCCUPIED.

### PROPERTY DETAILS

OutsideFeatures	ParkingGarage	OtherRooms	Basement
Deck	None	Dining Room	Crawl Space
Patio		Kitchen	
Porch		Living Room	
Sidewalks			
Heating	HotWater	Water	Sewer
Forced Air	Electric	Public	Public Sewer
Gas-Natural			



Ask for Margarita Kobilianets  
Berger Realty Inc  
1670 Boardwalk, Ocean City  
Call: 609-391-0500  
Email to: [mak@bergerrealty.com](mailto:mak@bergerrealty.com)

