



900 Leeds avenue  
 Pleasantville, NJ 08232

Asking \$0.00

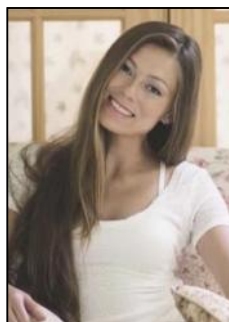


### COMMENTS

Prime Location for Atlantic County Services! This centrally located property offers a spacious 3,000 SF warehouse, along with two separate yard spaces, perfect for contractors or construction equipment storage. Conveniently situated near Atlantic City and major road networks, it provides easy access for businesses and clients alike. Lease rates: Yard #9 \$1500; Yard #10 \$1500; Warehouse \$2000/month. Gross + pro-rata utilities

### PROPERTY DETAILS

|             |               |        |              |
|-------------|---------------|--------|--------------|
| Exterior    | ParkingGarage | Water  | Sewer        |
| See Remarks | Off Street    | Public | Public Sewer |



Ask for Margarita Kobilianets  
 Berger Realty Inc  
 3160 Asbury Avenue, Ocean City  
 Call: 609-399-0076  
 Email to: mak@bergerrealty.com

