

# Berger Realty

Since 1920

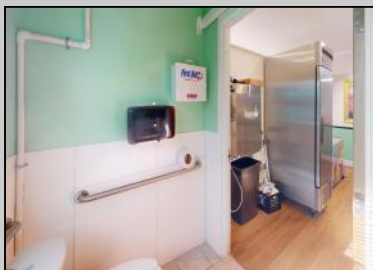
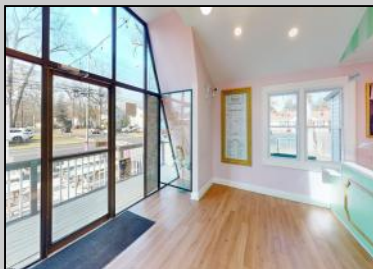


Berger Realty, Inc.  
3160 Asbury Avenue  
Ocean City, NJ 08226  
1-877-237-4371 / 609-399-0076  
info@bergerrealty.com



2318 New Rd  
Northfield, NJ 08225

Asking \$365,000.00



## COMMENTS

Welcome to 2318 New Rd in Northfield, NJ! This beautifully renovated commercial property offers a unique opportunity for a variety of potential uses. This space has been meticulously transformed with high ceilings and stunning architectural elements, creating a bright and spacious atmosphere. The classic A-frame boasts a total renovation, ensuring that every aspect of the space has been carefully updated to meet modern standards. Laminate floors throughout add a touch of elegance and durability, while the inclusion of central AC provides comfort and climate control. All new electrical, HVAC, plumbing and a new roof! The basement offers additional space for storage or customization to suit your needs. Currently outfitted as an office with loads of additional storage, this property presents a versatile canvas for your creative vision. Conveniently located in a high traffic area of Northfield, this property provides easy access to nearby businesses, offices and schools. Whether you are looking to establish a new business, or set up a professional office, this property offers endless possibilities. Approvals have already been applied for and received for use of open flame for ovens and grills. Don't miss out on the chance to make this distinctive space your new successful business location. Schedule a showing today and explore the potential that 2318 New Rd has to offer!

## PROPERTY DETAILS

OutsideFeatures	ParkingGarage	InteriorFeatures	Basement
Sign	6 to 10 Spaces	Display Windows	Finished
	Paved	Handicap Features	
		Restroom	



Ask for Michael Mose  
Berger Realty Inc  
3160 Asbury Avenue Ocean City  
Call: 609-399-0076  
Email to: mvm@bergerrealty.com

