



222 New Pleasantville, NJ 08234

Asking \$1,200,000.00

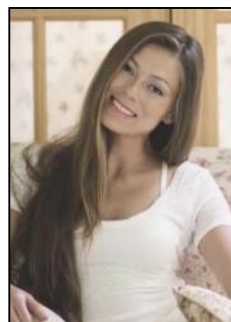


COMMENTS

Huge 2 stories warehouse in Pleasantville, approximate 5000 sq feet, zoning has been approved for Cannabis cultivation. Convenience location, close to highway, AC and Philadelphia. This is a package deal, including the warehouse and 2 pieces of land. They are in BL#374, Lot #9, 14, & 33 Previous use as a commercial kitchen and distribution facility. Selling AS Is condition, but have a lot of possibilities for \$\$\$\$\$! Neither the seller or listing agent make any representation as to the accuracy of any information contained herein. Buyer must conduct their own due diligence, verification, research and inspections and are relying solely on the results thereof.

PROPERTY DETAILS

| | | | |
|-------------------|---|---------------------------------|---|
| Exterior Brick | OutsideFeatures Loading Dock Truck Door | ParkingGarage 6 to 10 Spaces | InteriorFeatures 220 Volt Electricity Restroom Storage |
| Basement Slab | Water Public | Sewer Public Sewer | |



Ask for Margarita Kobilianets
Berger Realty Inc
1670 Boardwalk, Ocean City
Call: 609-391-0500
Email to: mak@bergerrealty.com

