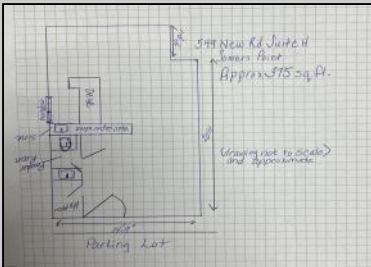


# Berger Realty

Since 1928



Berger Realty, Inc.  
3160 Asbury Avenue  
Ocean City, NJ 08226  
1-877-237-4371 / 609-399-0076  
info@bergerrealty.com



**549 New  
Somers Point, NJ 08244**

**Asking \$89,000.00**



## COMMENTS

Move your business close to the beach! End Unit Condo suite available immediately. Plenty of parking. Located on Route 9 (New Rd.) so easy for people to find you. Private restroom in unit and service sink. Quick close available, make an offer and move your business on in! \$131.06 HOA includes CA gas, landscaping, bldg maintenance, water/sewer, trash and snow removal

## PROPERTY DETAILS

Exterior Frame/Wood	Outside Features Restrooms Sign	Parking/Garage 11 or More Spaces Off Street	Interior Features 220 Volt Electricity Restroom
Basement Crawl Space	Heating Forced Air Gas-Natural	Cooling Central	Hot Water Electric
Water Public	Sewer Public Sewer		



Ask for Joyce McMahon  
Berger Realty Inc  
3160 Asbury Avenue, Ocean City  
Call: 609-399-0076  
Email to: jmm@bergerrealty.com

