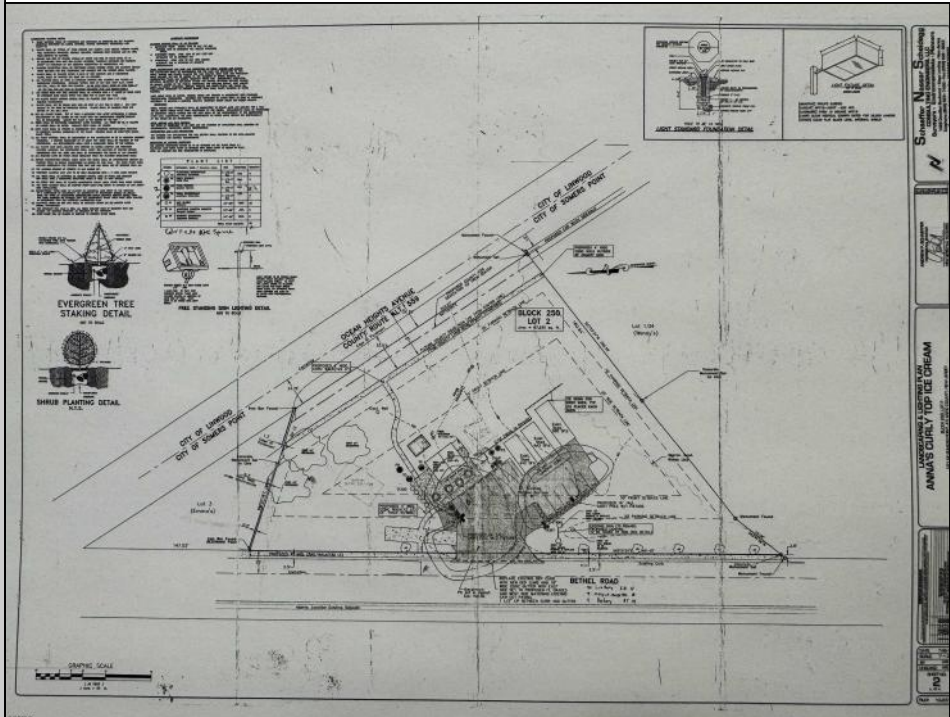




**535 Ocean Heights
 Somers Point, NJ 08244**

Asking \$1,990,000.00



COMMENTS

FOR SALE - Prime Development Parcel. Approx. 1.5+/- acres of land available for development. 2 street frontages: 435 feet of frontage on Bethel. 245+/- feet of frontage on Ocean Hts. Ave. Currently has 1 small 600+/- sf building on site. Excellent traffic count / pattern. Situated directly across from ShopRite, Starbucks, Applebee's . This "island" contains Wendy's, CVS, Advanced Auto. The "island" is bound by New Rd / Route 9 / Ocean Heights Ave. and Bethel Road. Zoning is GB

PROPERTY DETAILS



Ask for Tara Crusser-Moss
 Berger Realty Inc
 3160 Asbury Avenue, Ocean City
 Call: 609-399-0076
 Email to: tcm@bergerrealty.com

