

Berger Realty

Since 1928

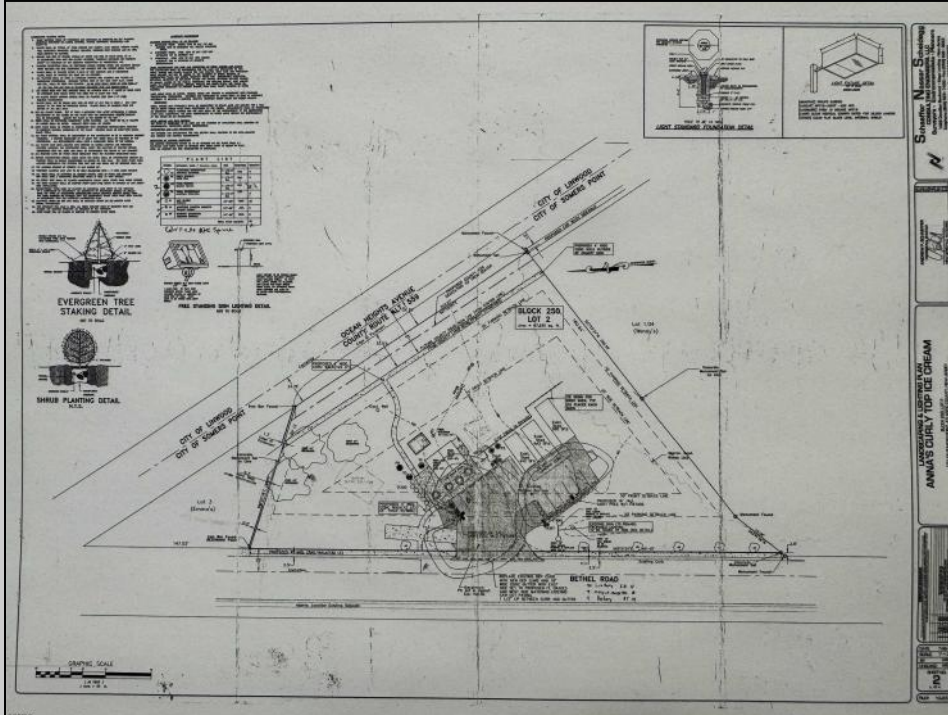


Berger Realty, Inc.
3160 Asbury Avenue
Ocean City, NJ 08226
1-877-237-4371 / 609-399-0076
info@bergerrealty.com



**535 Ocean Heights
Somers Point, NJ 08244**

Asking \$1,990,000.00



COMMENTS

FOR SALE - Prime Development Parcel. Approx. 1.5+/- acres of land available for development. 2 street frontages: 435 feet of frontage on Bethel. 245+/- feet of frontage on Ocean Hts. Ave. Currently has 1 small 600+/- sf building on site. Excellent traffic count / pattern. Situated directly across from ShopRite, Starbucks, Applebee's . This \"island\" contains Wendy's, CVS, Advanced Auto. The \"island\" is bound by New Rd / Route 9 / Ocean Heights Ave. and Bethel Road. Zoning is GB

PROPERTY DETAILS



Ask for Joyce McMahon
Berger Realty Inc
3160 Asbury Avenue, Ocean City
Call: 609-399-0076
Email to: jmm@bergerrealty.com

