



**301-315 Pitney
 Galloway Township, NJ 08205**

Asking \$2,250,000.00



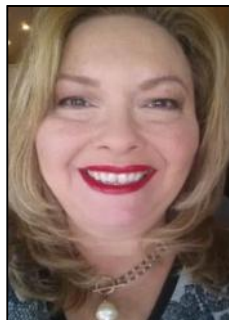
SJSRMLS

COMMENTS

GALLOWAY NEW COMMERCIAL LISTING ALERTPRIME OPPORTUNITY FOR DEVELOPERS / INVESTORS***7.69 ACRES***ZONED:COMMUNITY VILLAGE COMMERCIAL DISTRICT(CVC)**LOCATION, LOCATION, LOCATION - LOCATED NEXT TO RISLEYSQUARE***OPPORTUNITY AWAITS!***Galloway is GROWING!! Excellent opportunity to own prime real estate in the heart of Galloway a developers dream! ***301 S PITNEY RD HOUSE 4BED 2BATH***2,150 SQFT***3 BAY GARAGE 35X50***2 FLOORS AND LOFT***315 SPITNEY RD HOUSE***1,050 SQFT*** The possibilities are endless with this property, reside in one home, collect rent in another! Zoned for CVC use, currently 2 Residential homes on property and amazing garage that offers immense potential for business or pleasure. Work on cars, equipment and more with ample space and comfortability in your own backyard! Garage includes second floor and loft area.

PROPERTY DETAILS

Exterior Brick	ParkingGarage Attached Garage Detached Garage	Basement Crawl Space	Heating Gas-Natural
Water Public	Sewer Public Sewer		



Ask for Theresa Maina
 Berger Realty Inc
 3160 Asbury Avenue, Ocean City
 Call: 609-399-0076
 Email to: tam@bergerrealty.com

