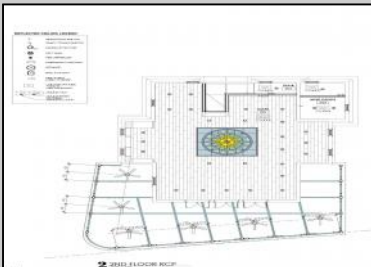
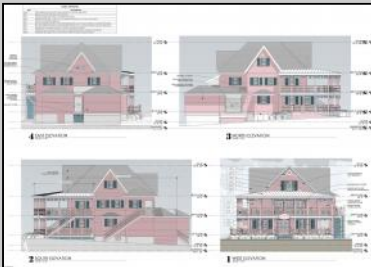




920 Shore Road
 Somers Point, NJ 08244

Asking \$750,000.00



COMMENTS

Welcome to 920 Shore Road. This is no doubt a desirable location in the growing Somers Point market. The property sits just off the base of the Ocean City 9th Street Bridge and is surrounded by many popular Restaurants and Businesses. 920 Shore will be a tremendous addition to the area. Approved for a 3,100sf building and twenty three car parking lot. Plans on file consist of a first floor kitchen with space designated to retail and package goods for walk in traffic. Second floor is laid out for indoor dining with a grand covered deck adding additional seating. Stunning design will make this a landmark building and the views will keep patrons coming back for generations. The third floor offers a one bedroom loft apartment adding to the value of this site. Building is currently down to the studs, prepped ready for construction. All the planning is done. Call for marketing and floor plans.

PROPERTY DETAILS

OutsideFeatures	ParkingGarage	InteriorFeatures	Basement
Loading Dock	11 or More Spaces	Handicap Features	6 Ft. or More Head
	Off Street	Living Space Available	Room
	Paved		
Water	Sewer		
Public	Public Sewer		



Ask for Michelle Benson
 Berger Realty Inc
 3160 Asbury Avenue, Ocean City
 Call: 609-399-0076
 Email to: mb@bergerrealty.com

